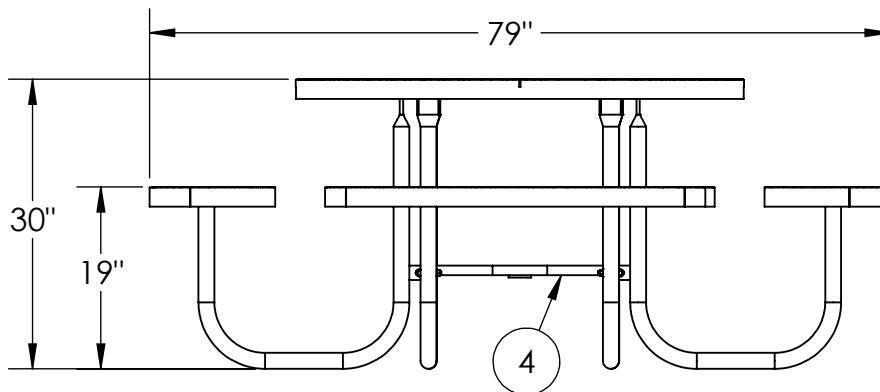
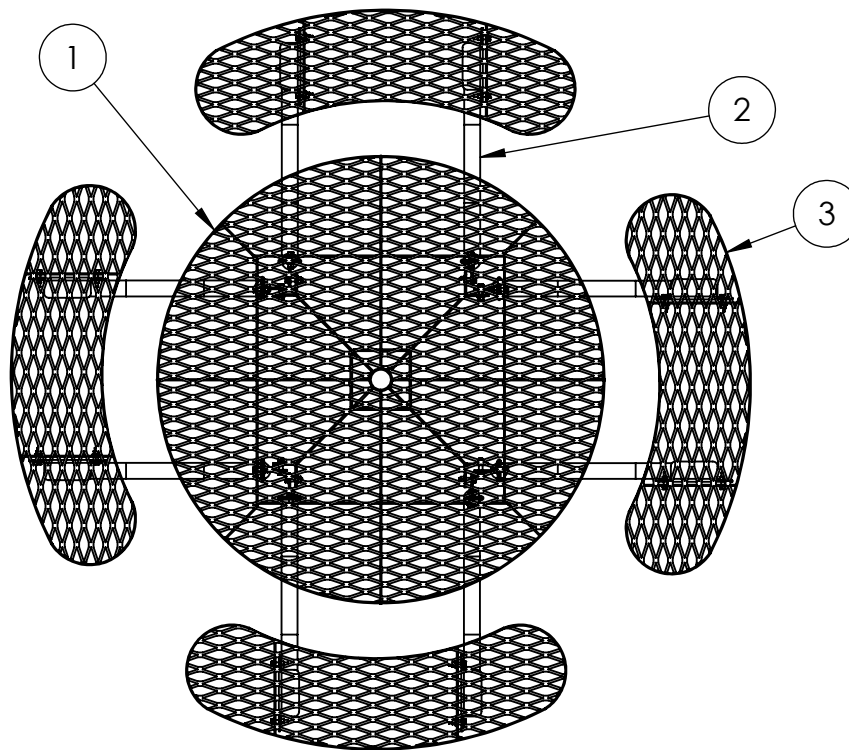




4' Expanded Metal Free Standing Round Table

955-101



ITEM NO.	PART NUMBER	DESCRIPTION	QTY.
1	642-R11	4' Round Table Top Exp. (QS)	1
2	634-111	Square Table Leg	8
3	622-R11	4' Round Table Seat Exp. (QS)	4
4	634-119	Square Table Leg X Brace	1
5	516-058	3/8"x1-1/2" SS Hex Bolt	32
6	516-028	3/8" SS Nylock Nut	32
7	516-023	3/8" SS Flat Washer	64



PREMIER POLYSTEEL

The Best Commercial Outdoor Furniture Available. Period.



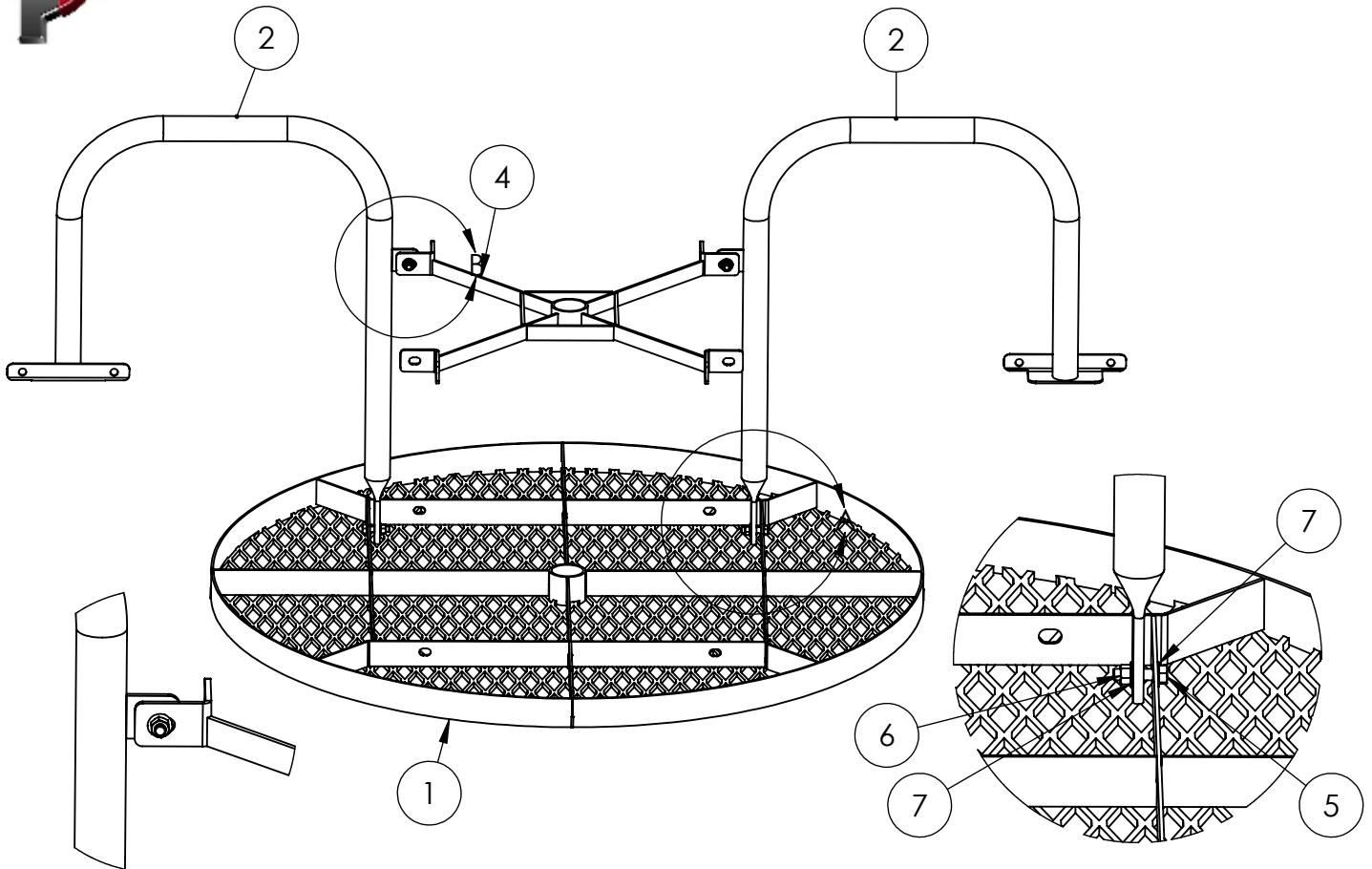
SIZE
A

Sheet 1 OF 2



4' Expanded Metal Free Standing Round Table

955-101



DETAIL B
SCALE 1 : 6

DETAIL A
SCALE 1 : 6

1. With table top upside down bolt 2 opposing legs on to top. As shown above. Do not tighten the bolts now.
2. Attach the "x" shaped leg brace to the 2 legs.
3. Attach the other 6 legs fastening to the "x" shaped leg brace as you go.
4. Attach seats to other end of leg. The vertical portion of the angle iron leg top bolts flush with the seat support bar.
5. Flip the table right side up, level the top and seats, and tighten all of the bolt

Tools List

- 7/16" Drill bit
- 9/16" Socket
- 9/16" Wrench
- Level
- Impact Gun (Optional)
- Drill

This product uses Hardware Pack HWPK01
(you may receive extra hardware)

32 qty. 3/8" x 1-1/2" SS Hex Bolt

32 qty. 3/8" SS Nylock Nut

64 qty. 3/8" SS Flat Washer

Periodic check of bolts tightness recommended



PREMIER POLYSTEEL

The Best Commercial Outdoor Furniture Available. Period.

