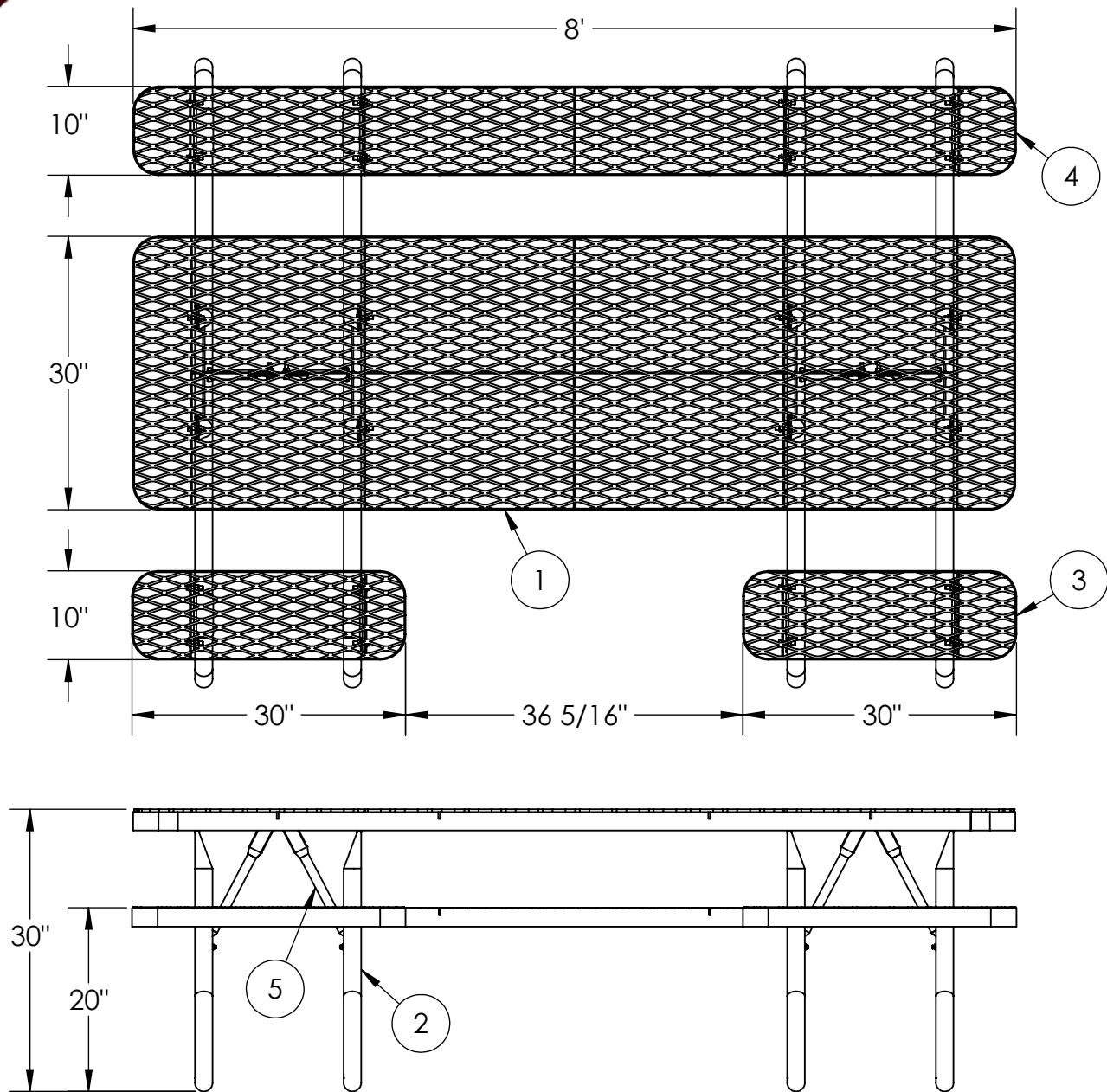




8' Champion Expanded Metal Free Standing Central Access Accessible Picnic Table

950-508



ITEM NO.	PART NUMBER	DESCRIPTION	QTY.
1	642-AC15	8' ADA Central Access Expanded Table	1
2	634-010	Free Standing Table Stand For 10" Seats	4
3	622-319	30" Champion Seat for 3' Sq Kids Table	2
4	622-AC15	8' ADA Central Access Expanded Seat	1
5	634-014	8ft FS Center ADA Table Brace	4
6	516-058	3/8"x1-1/2" SS Hex Bolt	32
7	516-023	3/8" SS Flat Washer	64
8	516-028	3/8" SS Nylock Nut	32



PREMIER POLYSTEEL

The Best Commercial Outdoor Furniture Available. Period.



SIZE

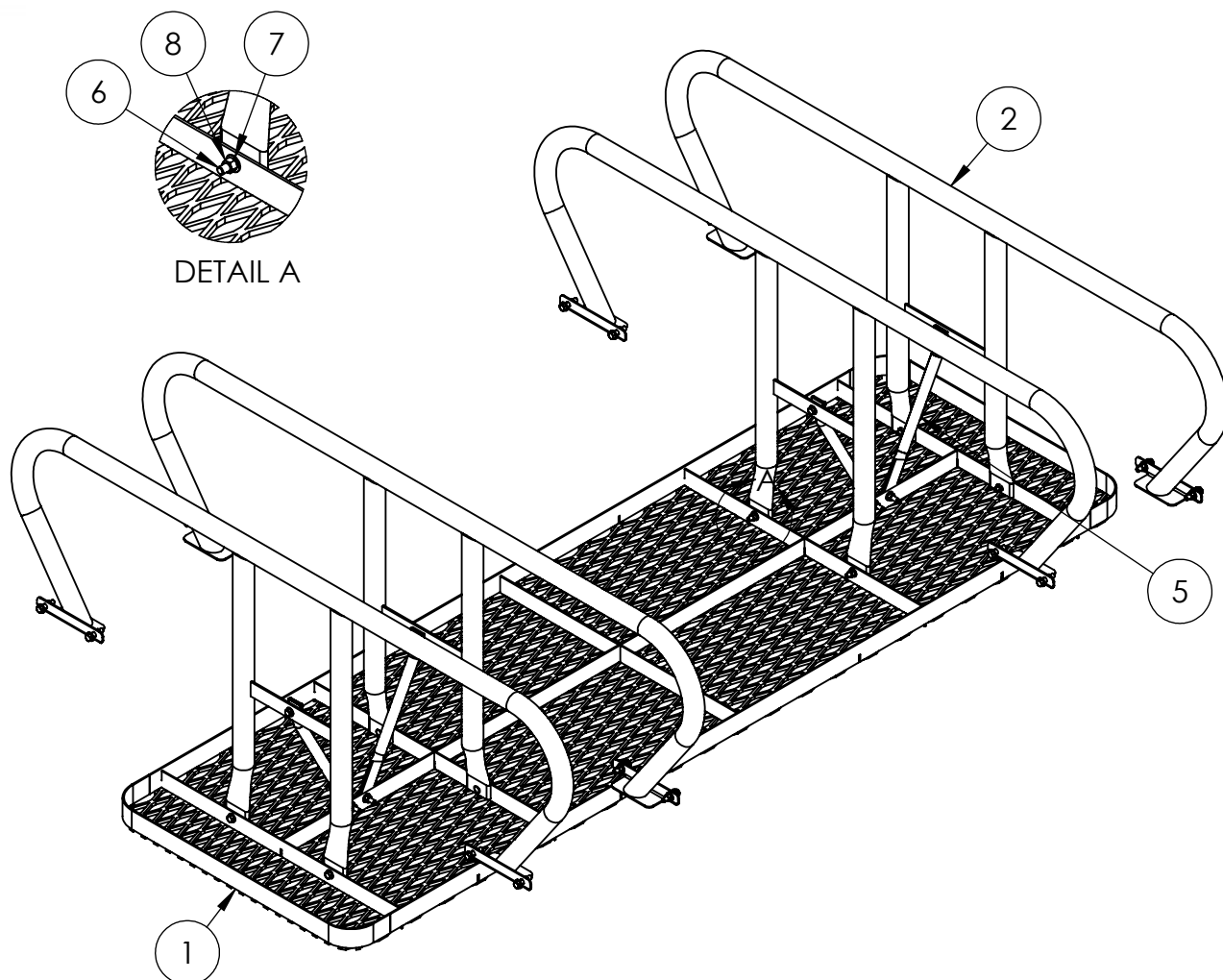
A

Sheet 1 OF 3



8' Champion Expanded Metal Free Standing Central Access Accessible Picnic Table

950-508



This product uses 2 of Hardware Pack HWPK02 (you may receive extra hardware)

16 qty. 3/8" x 1-1/2" SS Hex Bolt

16 qty. 3/8" SS Nylock Nut

32 qty. 3/8" SS Flat Washer

Tools List

- 7/16" Drill bit
- 9/16" Socket
- 9/16" Wrench
- Level
- Drill

1. Drill out plastic from all mounting holes using a 7/16" drill bit.
2. Flip the table top upside down as shown above and attach the stands loosely using fixings provided. Do not tighten up bolts at this stage.
3. Attach the braces as shown above.
4. Flip the table back to the correct position and attach the seats to the stands.
5. Level the seats and table then tighten up all bolts.

Periodic check of bolts tightness recommended



PREMIER POLYSTEEL

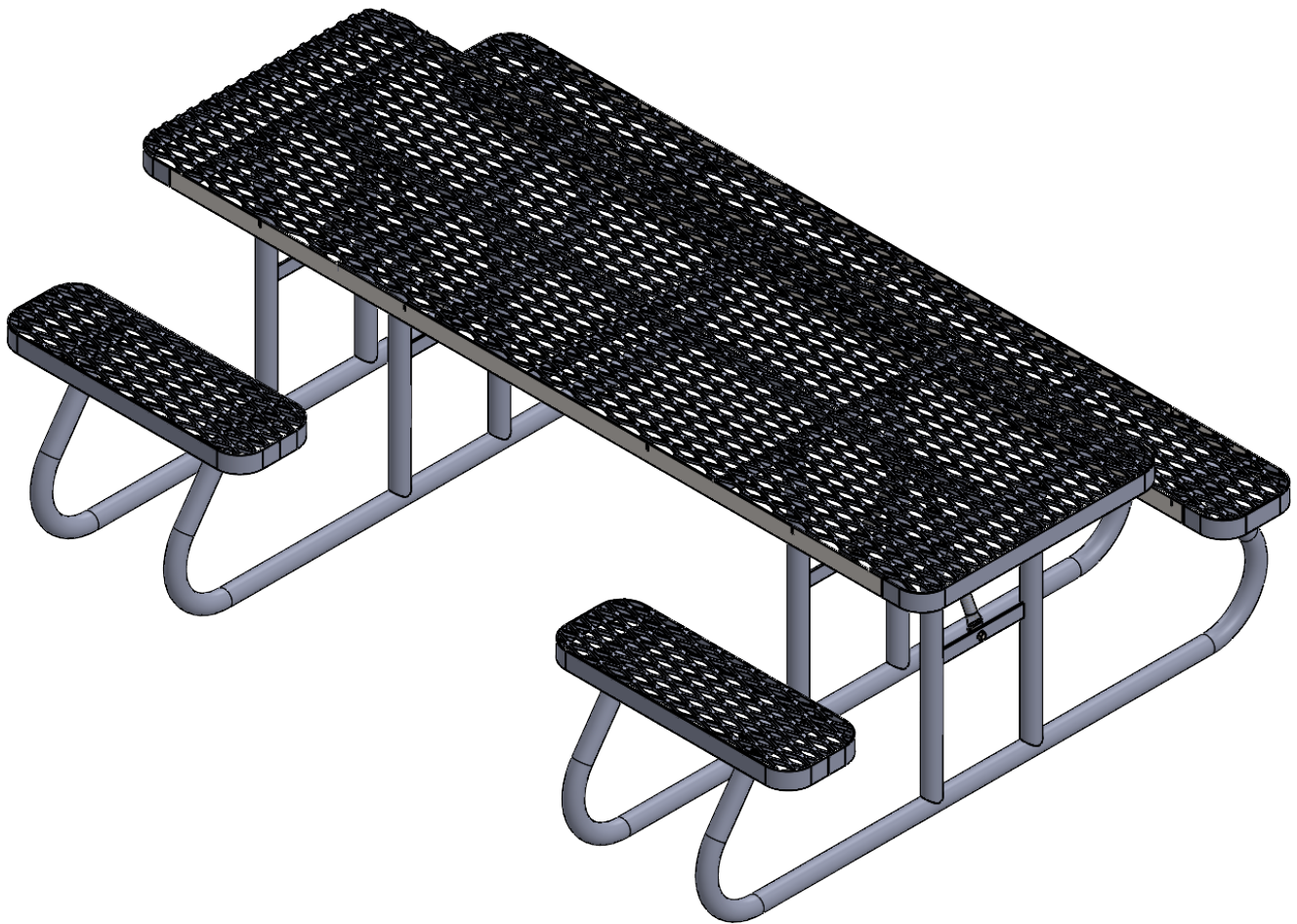
The Best Commercial Outdoor Furniture Available. Period.





**8' Champion Expanded Metal Free Standing Central Access
Accessible Picnic Table**

950-508



PREMIER POLYSTEEL

The Best Commercial Outdoor Furniture Available. Period.



SIZE
A

Sheet 3 OF 3