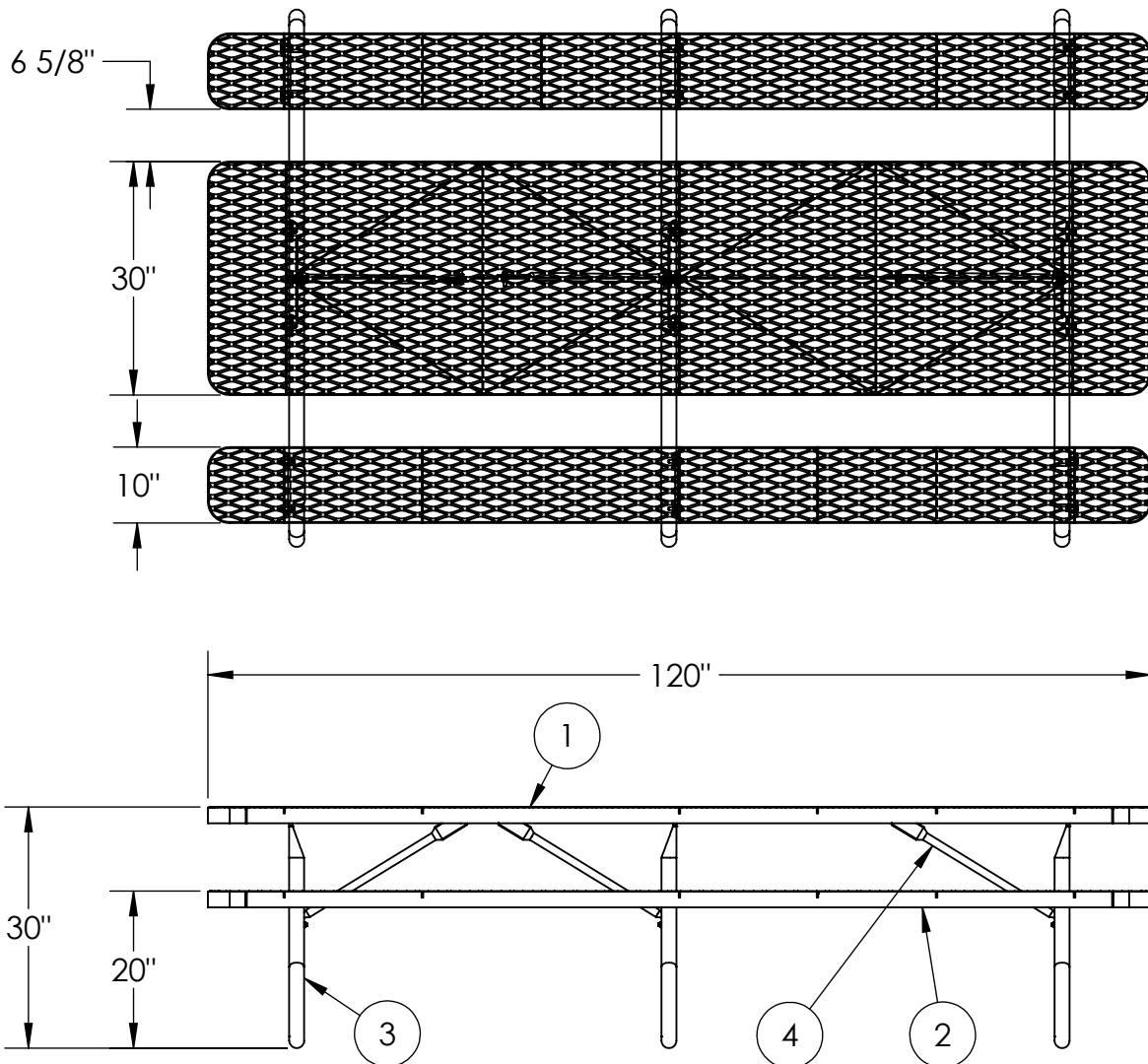




10' Champion Expanded Metal Free Standing Picnic Table

924-601



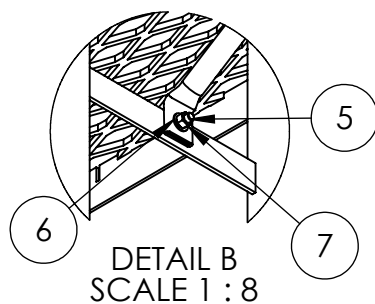
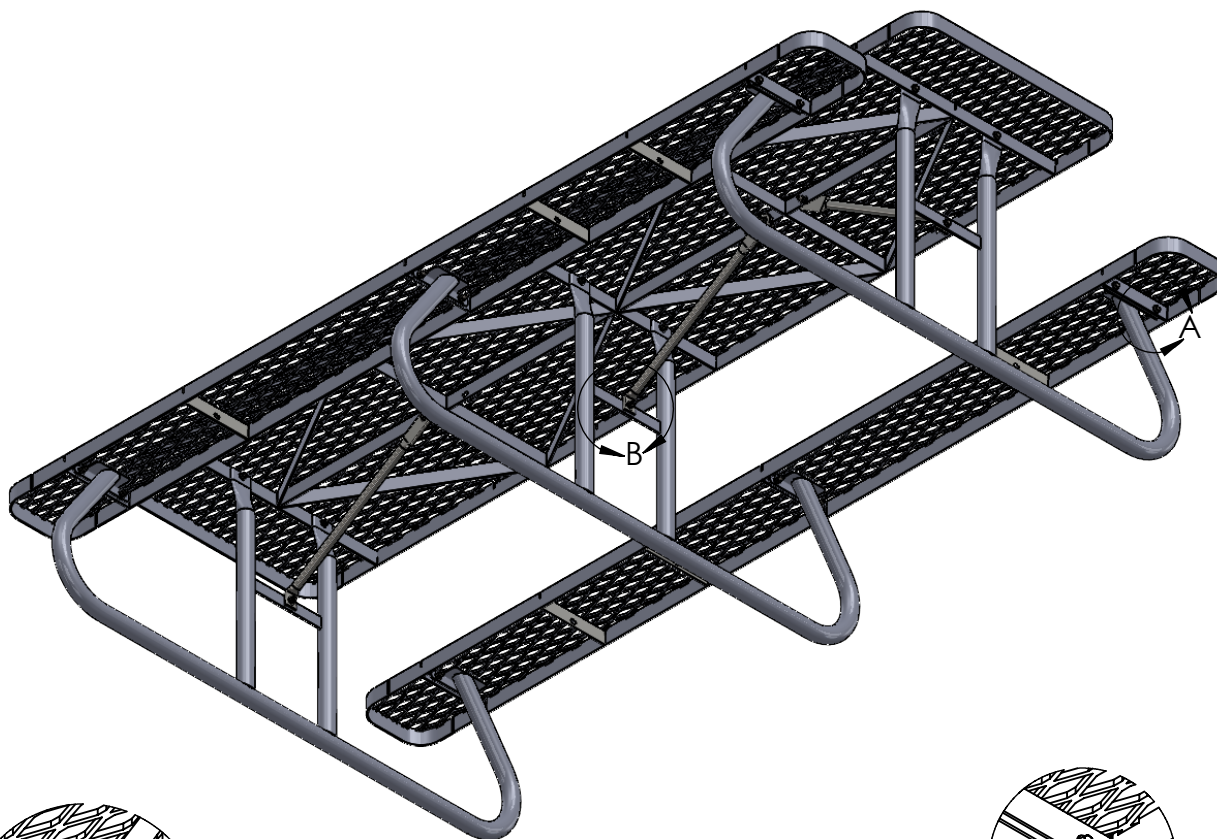
ITEM NO.	PART NUMBER	DESCRIPTION	QTY.
1	642-016	10' Champion Table Top	1
2	622-016	10' Champion Seat/Back	2
3	634-010	Free Standing Table Stand For 10" Seats	3
4	634-013A	Table Brace	3
5	516-058	3/8"x1-1/2" SS Hex Bolt	24
6	516-023	3/8" SS Flat Washer	48
7	516-028	3/8" SS Nylock Nut	24



PREMIER POLYSTEEL

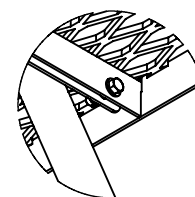
The Best Commercial Outdoor Furniture Available. Period.





Tools List

- 7/16" Drill bit
- 9/16" Socket
- 9/16" Wrench
- Level
- Impact Gun (Optional)
- Drill



DETAIL A
SCALE 1 : 8

1. Drill plastic out of the mounting holes on the seat, stands and braces using a 7/16" diameter drill bit.
2. Attach the stands to the inside of table support bar loosely with fixings provided. (See diagram above)
3. Attach the seats to the stands.
4. Attach the straight end of each brace to the table. (See diagram above)
5. Attach bent end of the braces to the cross bar of each stand. (See diagram above)
6. Set on level surface and tighten up bolts.

Periodic check of bolts tightness recommended



PREMIER POLYSTEEL

The Best Commercial Outdoor Furniture Available. Period.

