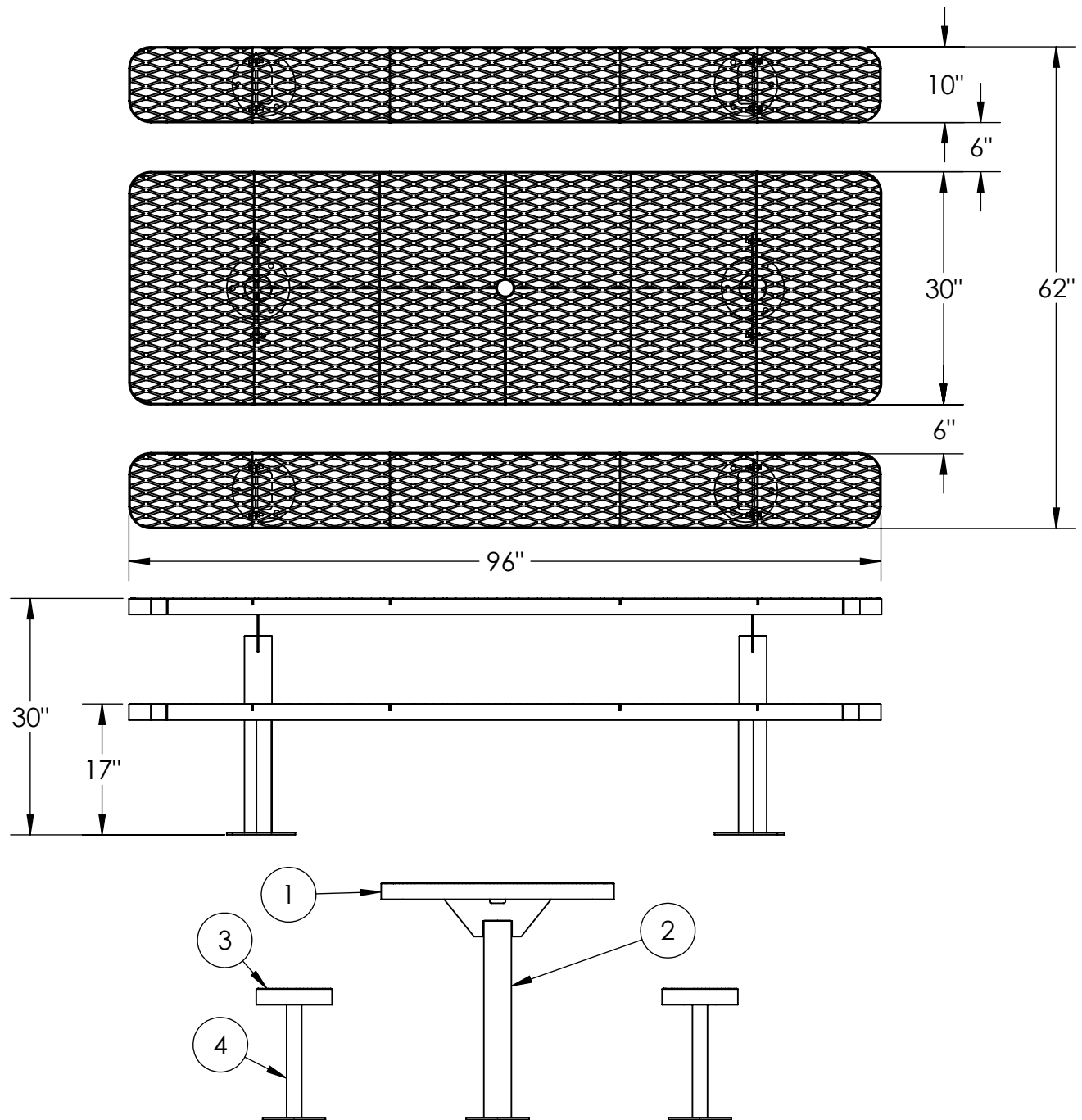




# 8' Champion Expanded Metal Surface Mount Multi-Pedestal Picnic Table

924-505



ITEM NO.	PART NUMBER	DESCRIPTION	QTY.
1	642-015	8' Champion Table Top (QS)	1
2	633-131	Pedestal (Table Top)	2
3	622-015	8' Champion Seat/Back (QS)	2
4	633-011	Bench Stand Without Back	4
5	516-058	3/8"x1-1/2" SS Hex Bolt	12
6	516-023	3/8" SS Flat Washer	24
7	516-028	3/8" SS Nylock Nut	12



## PREMIER POLYSTEEL

The Best Commercial Outdoor Furniture Available. Period.



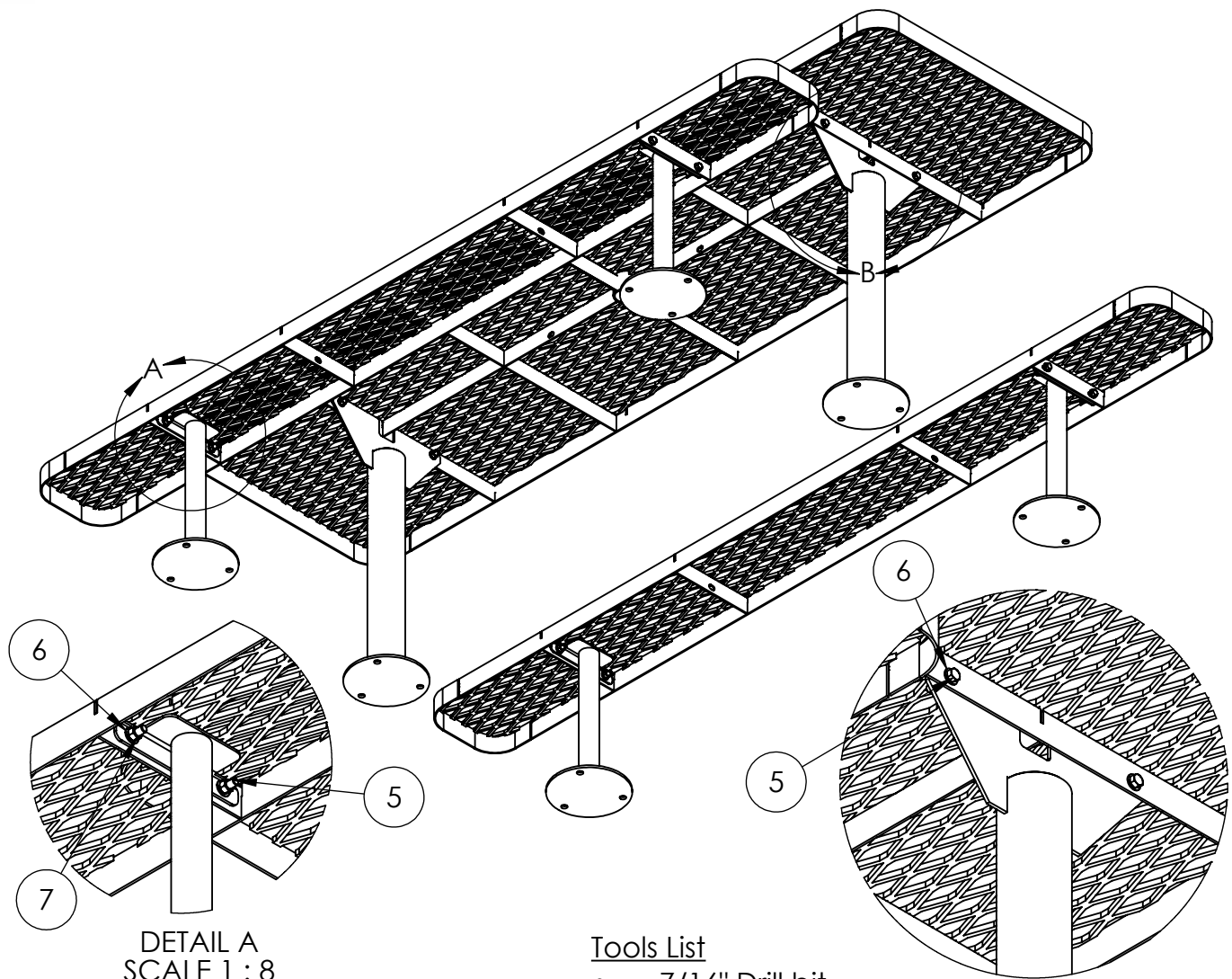
SIZE  
A

REV. X.01 | SHEET 1 OF 2



# 8' Champion Expanded Metal Surface Mount Multi-Pedestal Picnic Table

924-505



DETAIL A  
SCALE 1 : 8

DETAIL B  
SCALE 1 : 8

This product uses Hardware Pack HWPK07  
(you may receive extra hardware)

12 qty. 3/8" x 1-1/2" SS Hex Bolt  
15 qty. 3/8" SS Nylock Nut  
27 qty. 3/8" SS Flat Washer

## Tools List

- 7/16" Drill bit
- 9/16" Socket
- 9/16" Wrench
- Level
- Impact Gun (Optional)
- Drill

1. Drill out plastic from all mounting holes using a 7/16" diameter drill bit.
2. Loosely attach the pedestal stands to the seats and the table using fixings provided.
3. Set the table and seats on flat ground, level up and tighten fixings.
4. Place the seats and table in the desired location and mark out base holes.
5. Move the furniture to a safe place and drill holes.
6. Put furniture back in place, level and secure down using appropriate fixings for flooring material.



## PREMIER POLYSTEEL

The Best Commercial Outdoor Furniture Available. Period.

