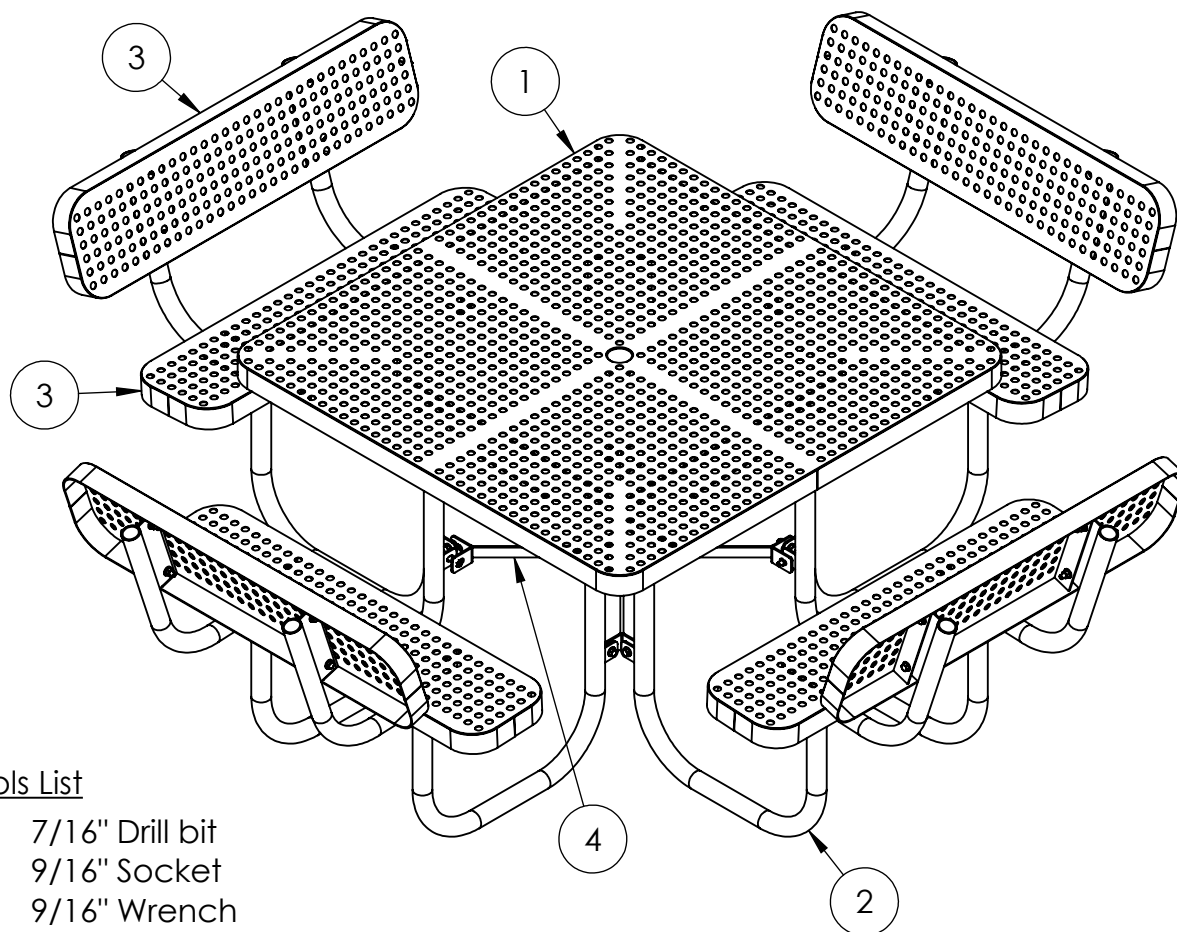




Premier 4' Champion Square With Back Rests Perforated Metal Free Standing Picnic Table

922-1P1



Tools List

- 7/16" Drill bit
- 9/16" Socket
- 9/16" Wrench
- Level
- Impact Gun (Optional)
- Drill

This product uses Hardware Pack HWPK01
(you may receive extra hardware)
32 qty. 3/8" x 1-1/2" SS Hex Bolt
32 qty. 3/8" SS Nylock Nut
64 qty. 3/8" SS Flat Washer

This product uses Hardware Pack HWPK02
(you may receive extra hardware)
16 qty. 3/8" x 1-1/2" SS Hex Bolt
16 qty. 3/8" SS Nylock Nut
32 qty. 3/8" SS Flat Washer

ITEM NO.	PART NUMBER	DESCRIPTION	QTY.
1	642-1P1	Champion Perforated Square Table Top	1
2	634-121	Sq./Rnd. Table Free Standing Leg w/Back	8
3	622-039	Champion 40" Seat Perforated	8
4	634-119	Square Table Leg X Brace	1
5	516-058	3/8"x1-1/2" SS Hex Bolt	48
6	516-023	3/8" SS Flat Washer	96
7	516-028	3/8" SS Nylock Nut	48



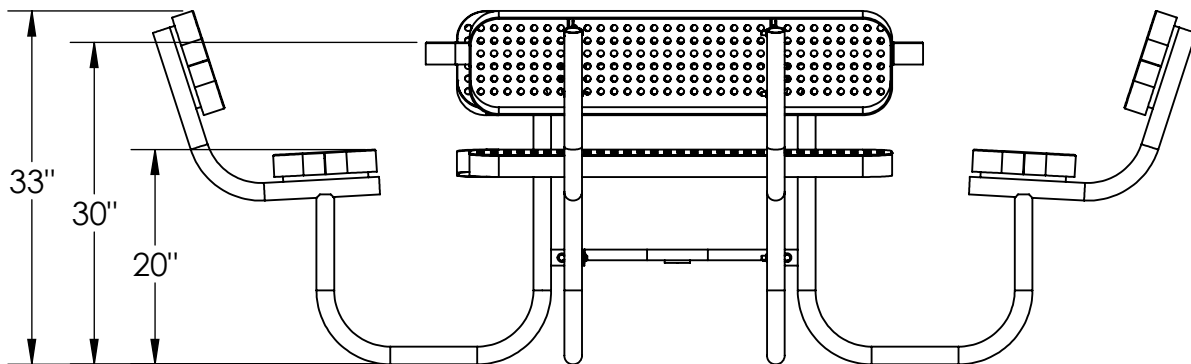
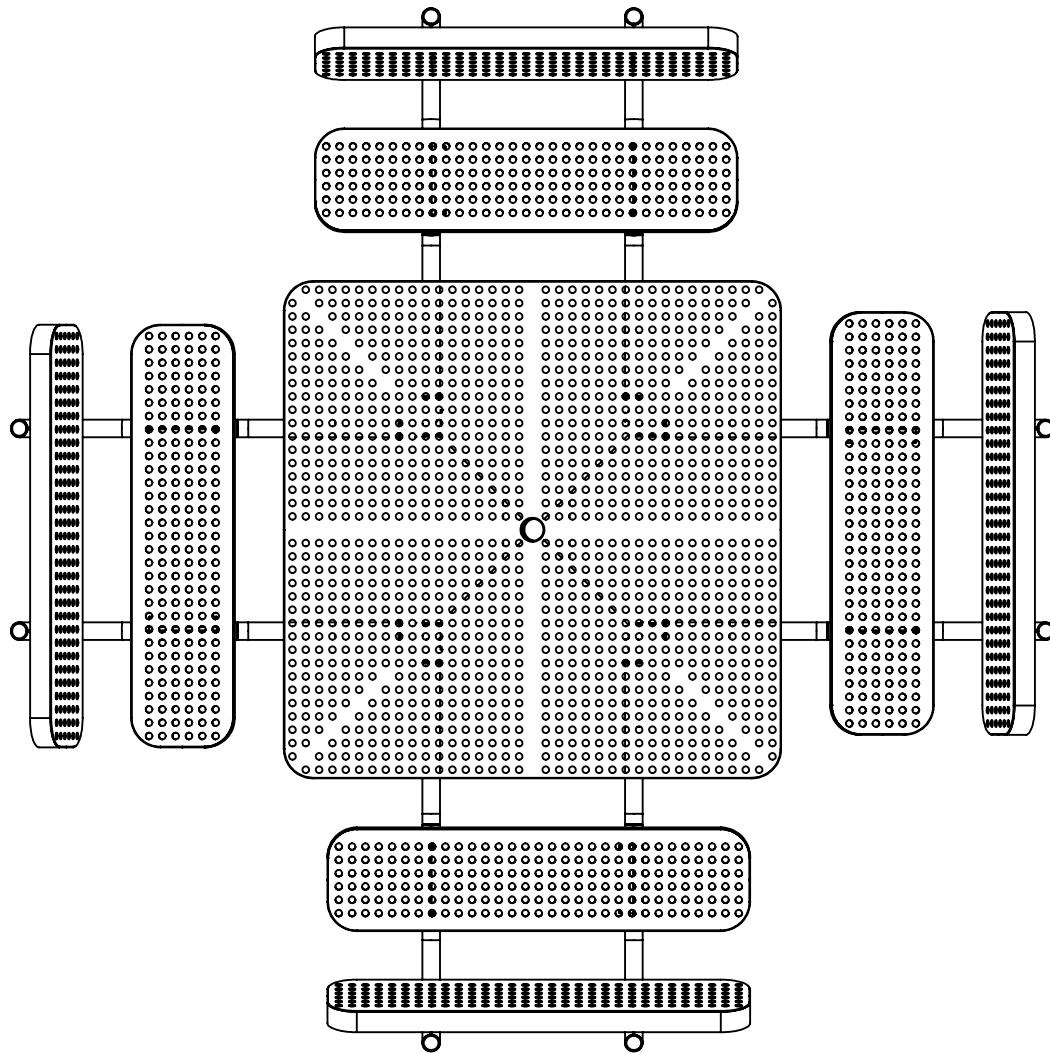
PREMIER POLYSTEEL

The Best Commercial Outdoor Furniture Available. Period.



Premier 4' Champion Square With Back Rests Perforated Metal Free Standing Picnic Table

922-1P1



PREMIER POLYSTEEL

The Best Commercial Outdoor Furniture Available. Period.

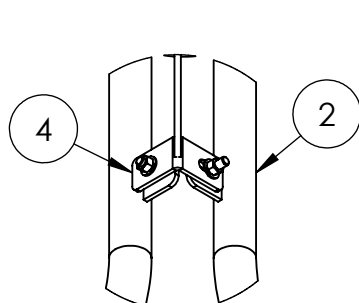
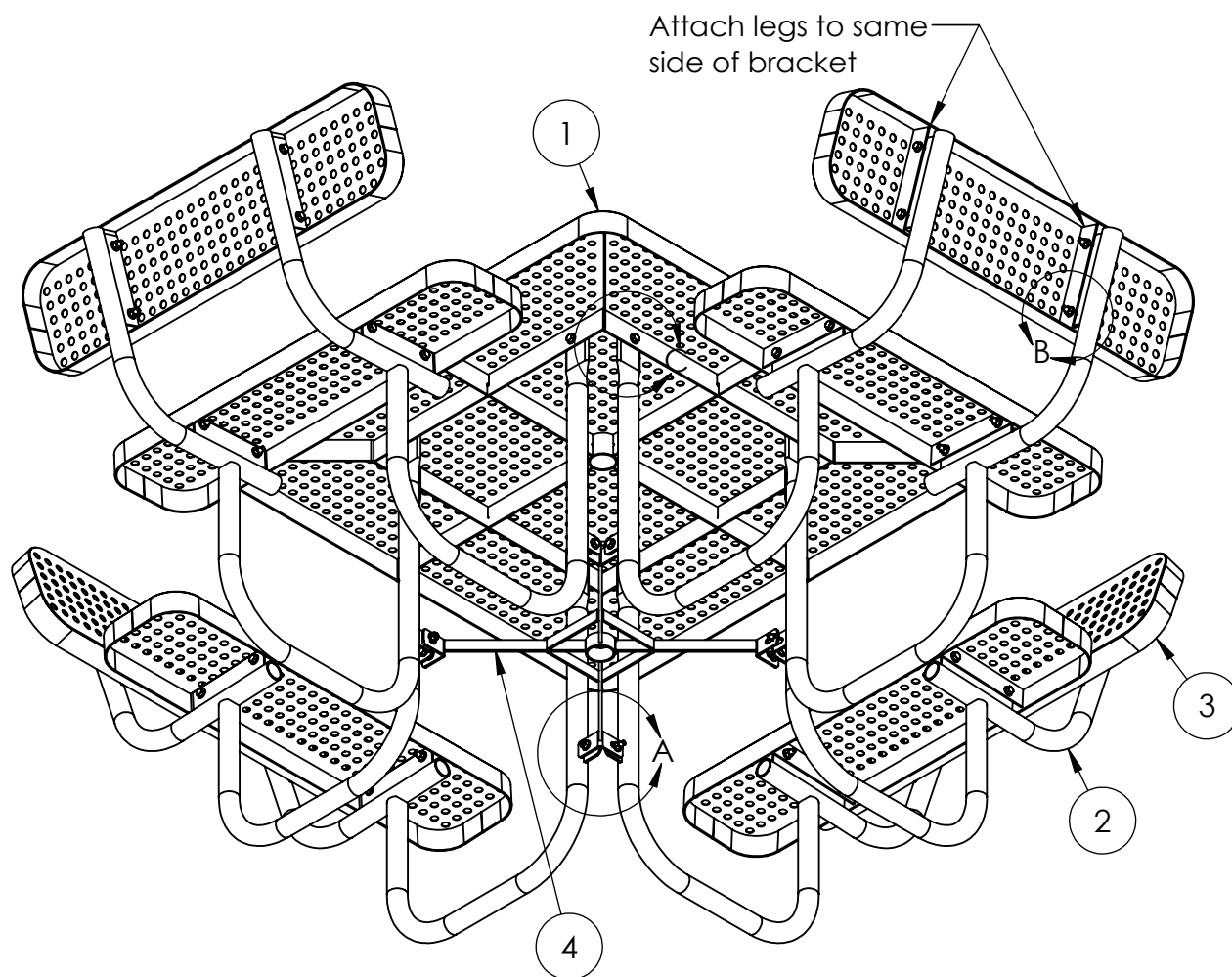


SIZE
A

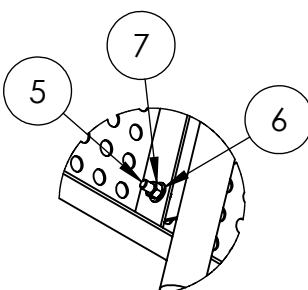
REV. X.01 | SHEET 2 OF 4

Premier 4' Champion Square With Back Rests Perforated Metal Free Standing Picnic Table

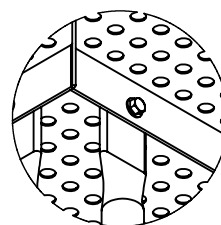
922-1P1



DETAIL A



DETAIL B



DETAIL C



PREMIER POLYSTEEL

The Best Commercial Outdoor Furniture Available. Period.



SIZE
A

REV. X.01 | SHEET 3 OF 4



Premier 4' Champion Square With Back Rests Perforated Metal Free Standing Picnic Table

922-1P1

ASSEMBLY NOTES

1. Drill plastic out of all holes using a 7/16" drill bit.
2. Place the tabletop upside down on top of a pair of sawhorses or 12" blocks (cover the blocks with cardboard).
3. Attach the leg top to the inside of the tabletop frame (detail C) with a hex bolt, 2 washers and a nut. Do not tighten completely.
4. Repeat step 3 by attaching another leg on the same side as the first.
5. Attach the leg bracket to the mounting brackets on the 2 legs that you just attached to the tabletop (detail A) using bolts, nuts and washers. Again do not tighten completely.
6. Continue attaching the legs to the tabletop and leg bracket. When you have all of the legs attached, flip the table right side up.
7. Bolt the seats and backs to the legs. Note: The cross frames on the seat/back aren't the same distance from the ends. Be sure to align the seat with the back. The cross frame on the seat/back attaches to the same side of the mounting plate on each leg. (Both on the left or both on the right).
8. When you have all of the parts attached you can begin tightening the bolts. Make sure the table is on a level surface and adjust the legs and set/backs so that they are level as you tighten each component.

Periodic check of bolts tightness recommended

In accordance to California law: WARNING - This product contains a chemical known to the State of California to cause cancer and birth defects or other reproductive harm.



PREMIER POLYSTEEL

The Best Commercial Outdoor Furniture Available. Period.



SIZE
A

REV. X.01 | SHEET 4 OF 4