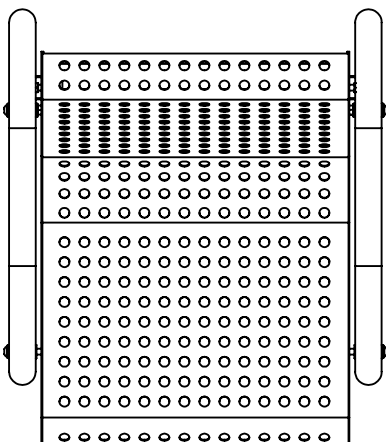




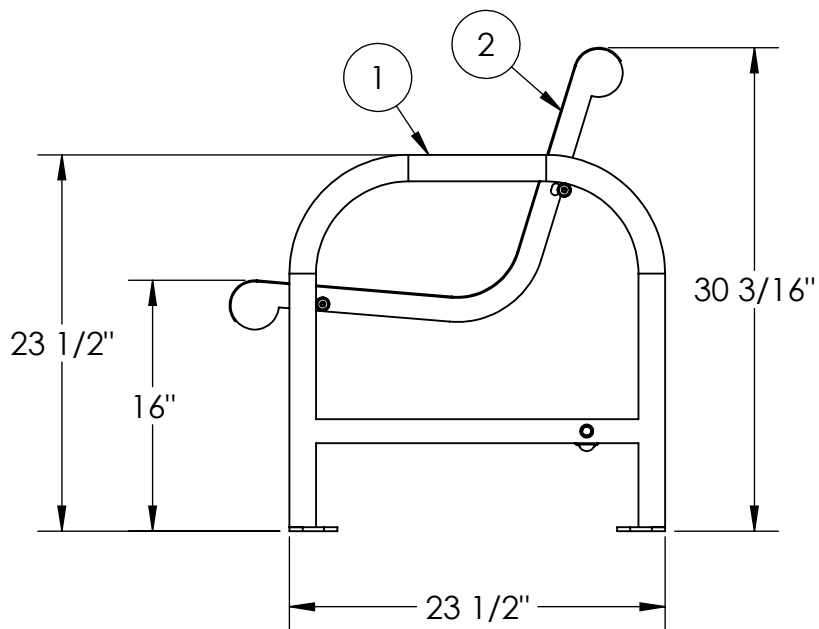
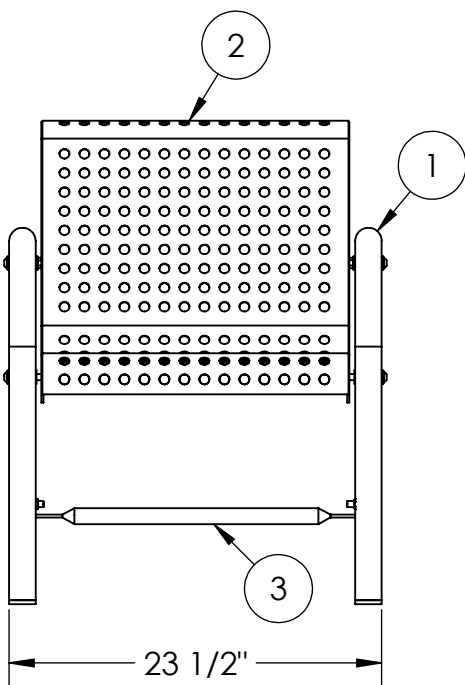
# Patio Perforated Metal Chair

938-OP3



## Tools List

- 7/16" Drill bit
- 9/16" Socket
- 9/16" Wrench
- Level
- Impact Gun (Optional)
- Drill



ITEM NO.	PART NUMBER	DESCRIPTION	QTY.
1	733-014	GC with Back Surface Mount Patio Chair Stand	2
2	623-OP7	Patio Perforated Chair	1
3	735-004	GC with Back Surface Mount Patio Chair Brace	1
4	516-058	3/8"x1-1/2" SS Hex Bolt	2
5	516-023	3/8" SS Flat Washer	12
6	517-028	3/8" Zinc Nylock Nut	6
7	516-066	3/8"x3" SS Btn Skt Cap Scr.	4



**PREMIER POLYSTEEL**

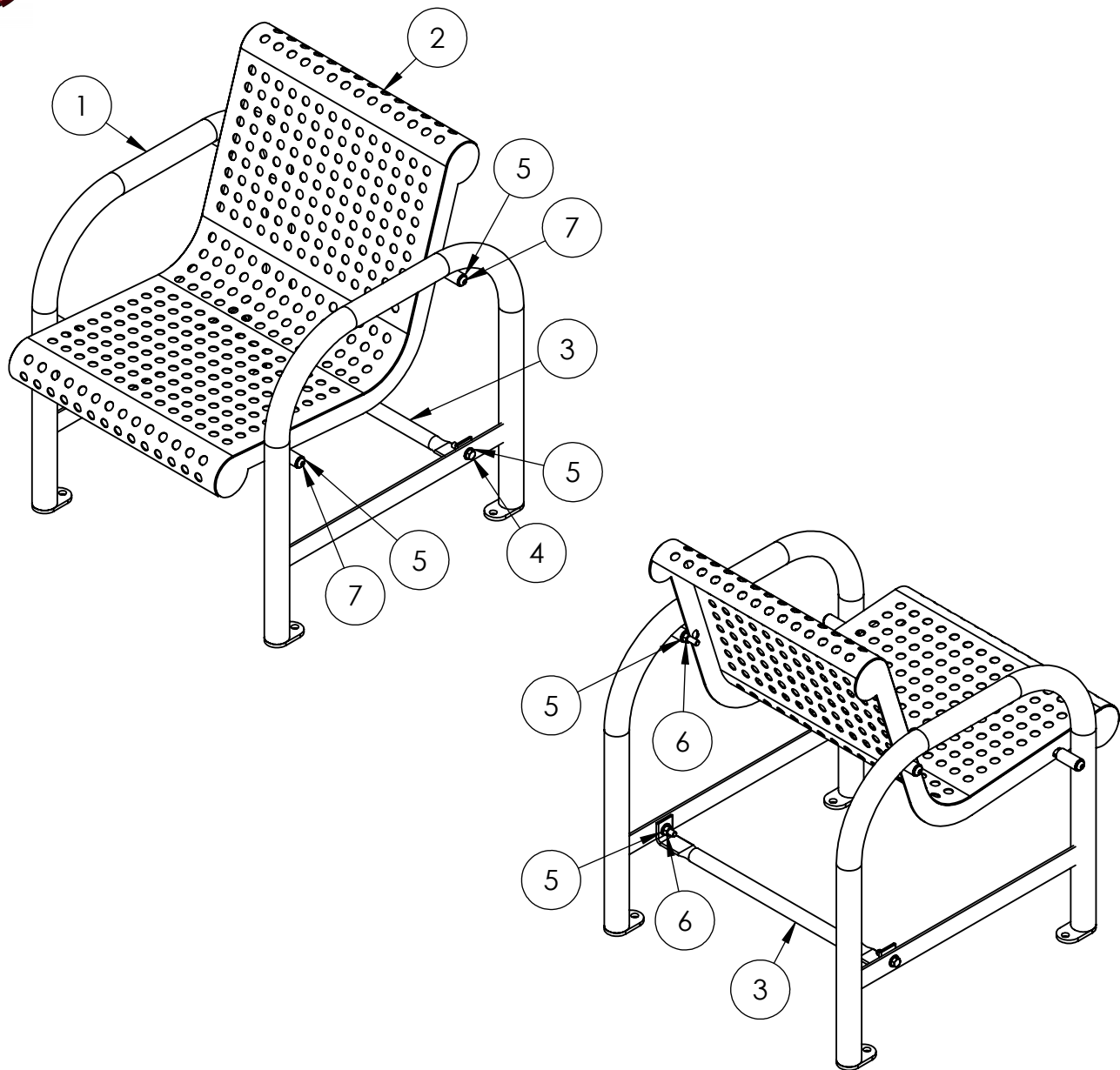
The Best Commercial Outdoor Furniture Available. Period.





## Patio Perforated Metal Chair

938-OP3



1. Drill plastic out of the mounting holes on the seat and stands using a 7/16" dia. drill bit.
2. Fasten the seat to the stands loosely using fixings provided.
3. Make sure the seat is level and tighten all the bolts.
4. Position bench where desired and anchor down using appropriate fixings for the flooring material.

*Periodic check of bolts tightness recommended*

In accordance to California law: WARNING - This product contains a chemical known to the State of California to cause cancer and birth defects or other reproductive harm.



**PREMIER POLYSTEEL**

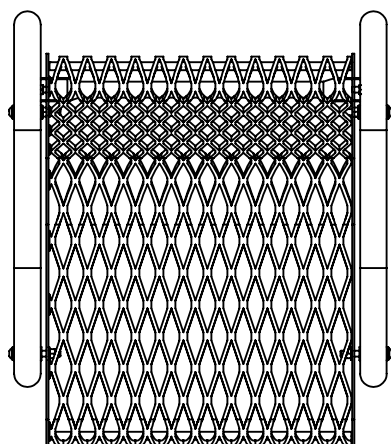
The Best Commercial Outdoor Furniture Available. Period.





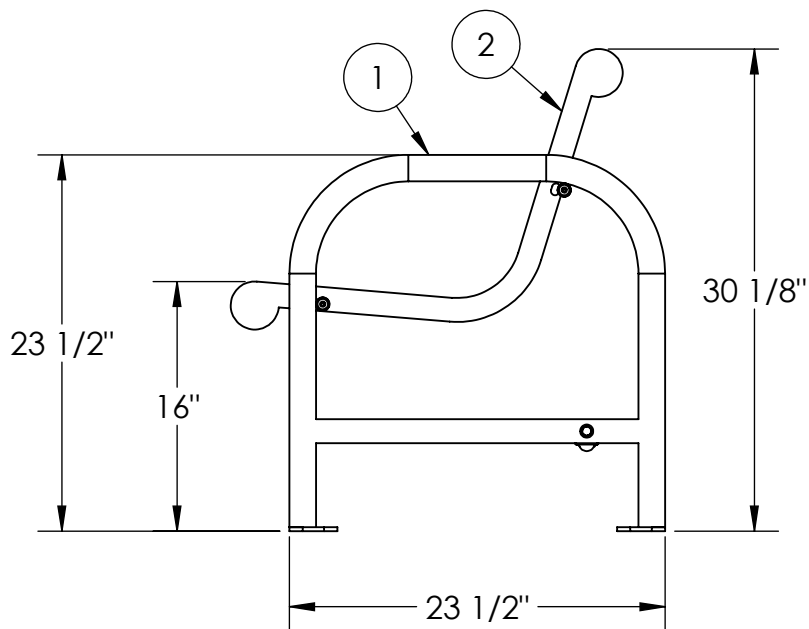
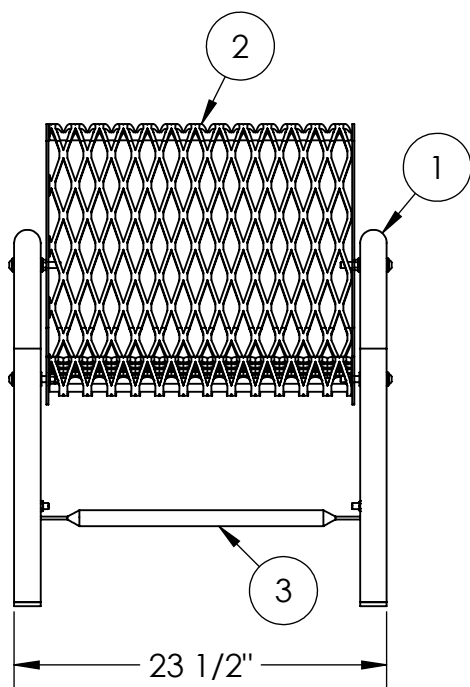
# Patio Expanded Metal Chair

938-317



## Tools List

- 7/16" Drill bit
- 9/16" Socket
- 9/16" Wrench
- Level
- Impact Gun (Optional)
- Drill



ITEM NO.	PART NUMBER	DESCRIPTION	QTY.
1	733-014	GC with Back Surface Mount Patio Chair Stand	2
2	623-007	Patio Chair Expanded Metal	1
3	735-004	GC with Back Surface Mount Patio Chair Brace	1
4	516-058	3/8"x1-1/2" SS Hex Bolt	2
5	516-023	3/8" SS Flat Washer	12
6	517-028	3/8" Zinc Nylock Nut	6
7	516-066	3/8"x3" SS Btn Skt Cap Scr.	4



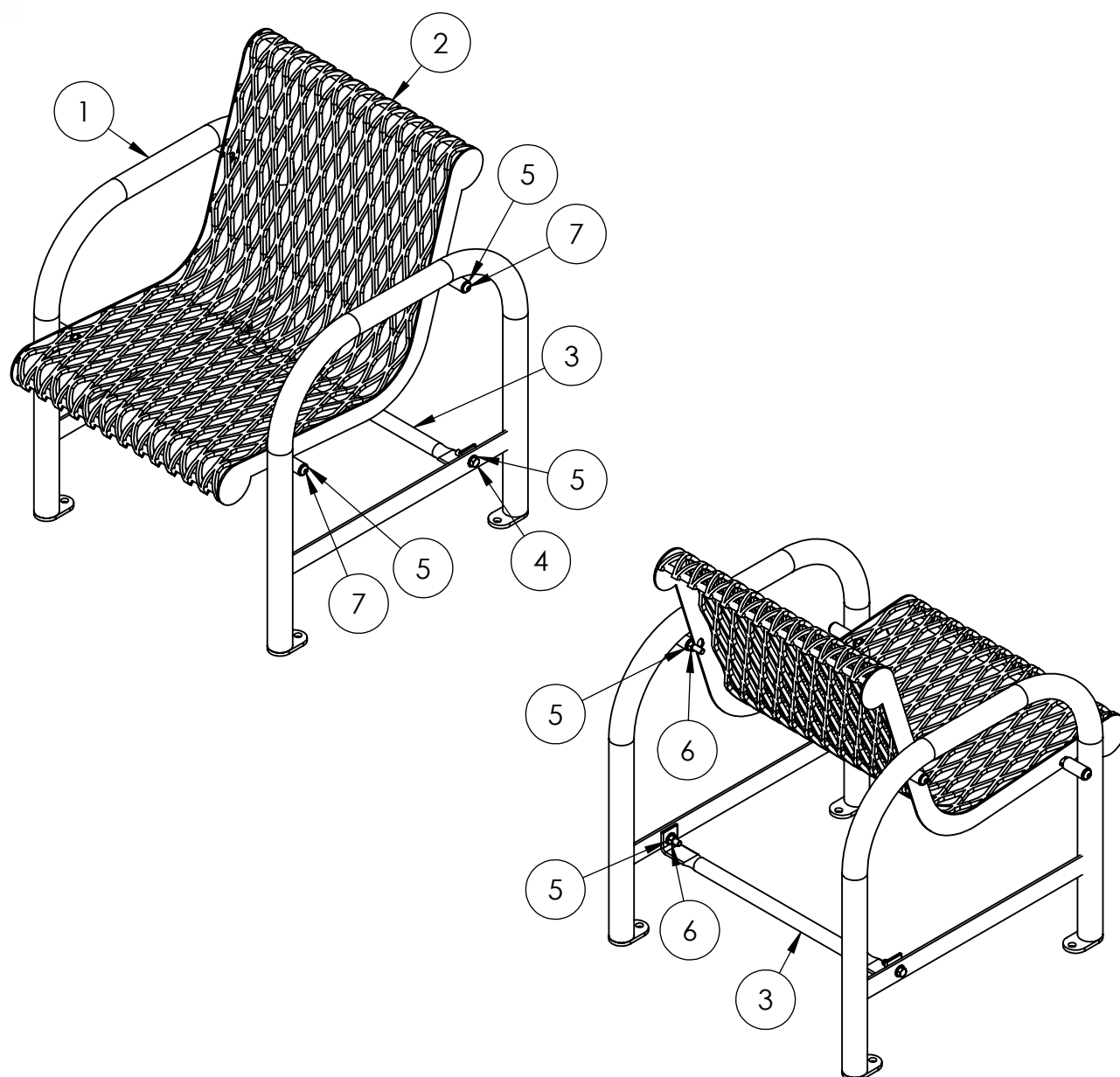
**PREMIER POLYSTEEL**

The Best Commercial Outdoor Furniture Available. Period.



SIZE  
A

REV. X.01 | SHEET 1 OF 2



1. Drill plastic out of the mounting holes on the seat and stands using a 7/16" dia. drill bit.
2. Fasten the seat to the stands loosely using fixings provided.
3. Make sure the seat is level and tighten all the bolts.
4. Position bench where desired and anchor down using appropriate fixings for the flooring material.

*Periodic check of bolts tightness recommended*

In accordance to California law: WARNING - This product contains a chemical known to the State of California to cause cancer and birth defects or other reproductive harm.



## **PREMIER POLYSTEEL**

The Best Commercial Outdoor Furniture Available. Period.

