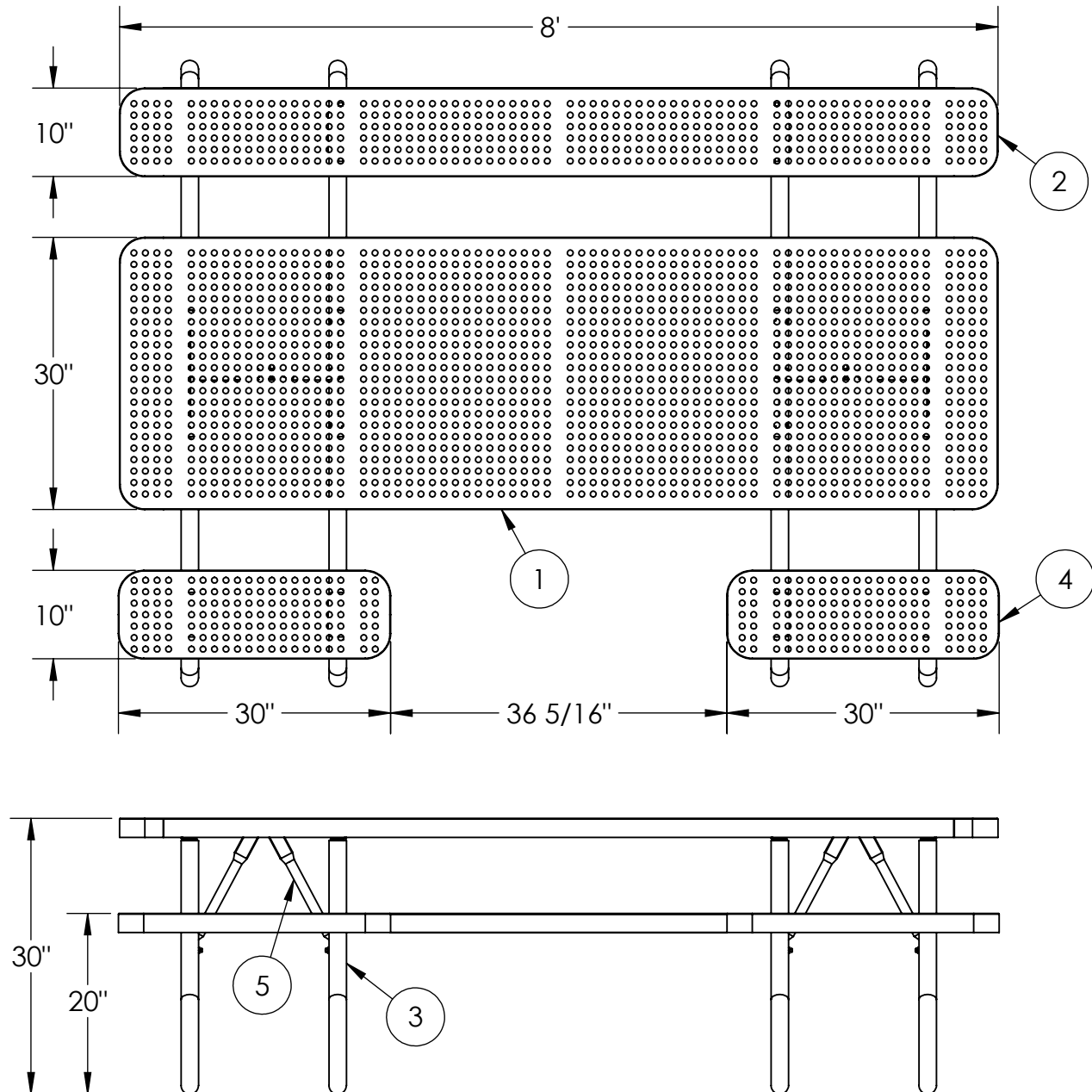




# 8' Champion Perforated Metal Free Standing Central Access Accessible Picnic Table

950-5P8



ITEM NO.	PART NUMBER	DESCRIPTION	QTY.
1	642-ACP15	8' ADA Central Access Perforated Table	1
2	622-ACP15	8' ADA Central Access Perforated Bench	1
3	634-010	Free Standing Table Stand For 10" Seats	4
4	622-3P9	30" Champ Perf Kids Seat	2
5	634-014	8ft FS Center ADA Table Brace	4
6	516-058	3/8"x1-1/2" SS Hex Bolt	32
7	516-023	3/8" SS Flat Washer	64
8	516-028	3/8" SS Nylock Nut	32



**PREMIER POLYSTEEL**

The Best Commercial Outdoor Furniture Available. Period.



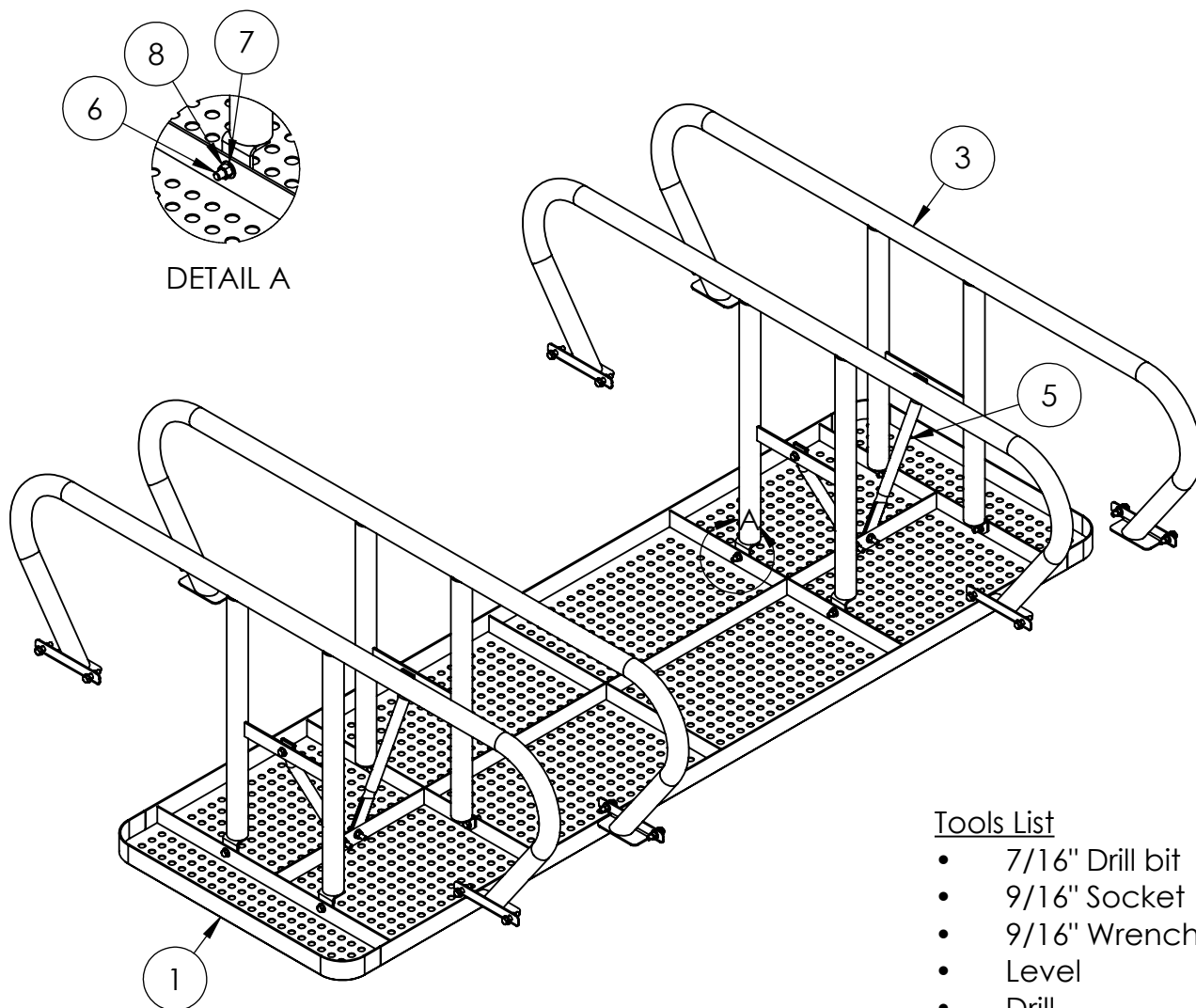
SIZE  
**A**

REV. X.01 | SHEET 1 OF 3



# 8' Champion Perforated Metal Free Standing Central Access Accessible Picnic Table

950-5P8



## Tools List

- 7/16" Drill bit
- 9/16" Socket
- 9/16" Wrench
- Level
- Drill

1. Drill out plastic from all mounting holes using a 7/16" drill bit.
2. Flip the table top upside down as shown above and attach the stands loosely using fixings provided. Do not tighten up bolts at this stage.
3. Attach the braces as shown above.
4. Flip the table back to the correct position and attach the seats to the stands.
5. Level the seats and table then tighten up all bolts.

*Periodic check of bolts tightness recommended*



## PREMIER POLYSTEEL

The Best Commercial Outdoor Furniture Available. Period.



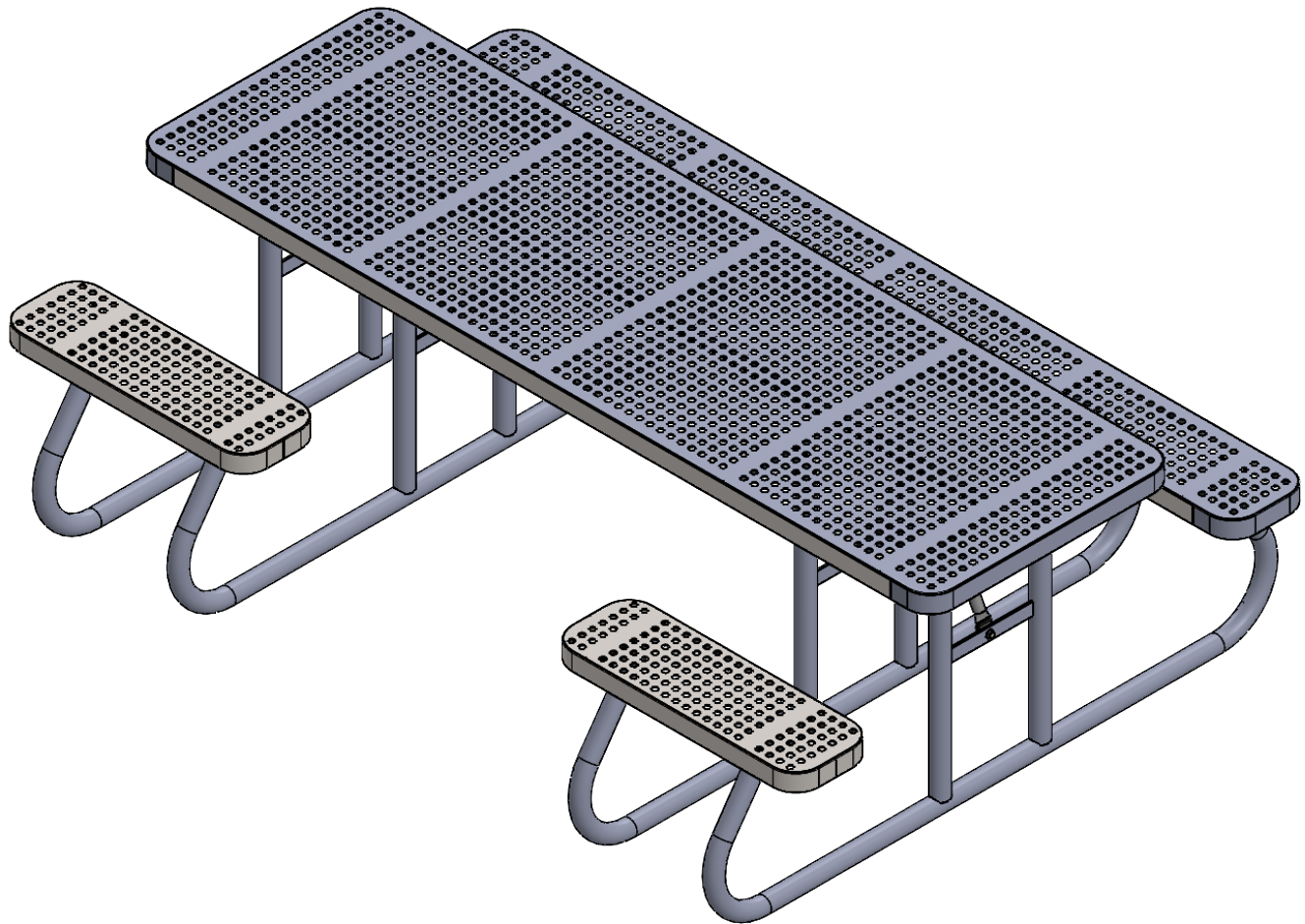
SIZE  
**A**

REV. X.01 | SHEET 2 OF 3



# 8' Champion Perforated Metal Free Standing Central Access Accessible Picnic Table

950-5P8



In accordance to California law: WARNING - This product contains a chemical known to the State of California to cause cancer and birth defects or other reproductive harm.



## PREMIER POLYSTEEL

The Best Commercial Outdoor Furniture Available. Period.



SIZE  
**A**

REV. X.01 | SHEET 3 OF 3