

ITEM NO.	PART NUMBER	DESCRIPTION	QTY.
1	625-001	Flat Rib Sheet	1
2	733-212	Grand Contour Tube Frame DB	1
3	516-033	3/8"x4" SS Button Head Cap Screw	4
4	516-023	3/8" SS Flat Washer	8
5	516-028	3/8" SS Nylock Nut	4



**PREMIER POLYSTEEL**

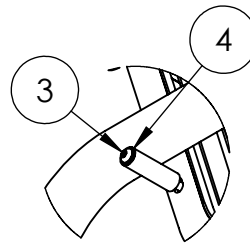
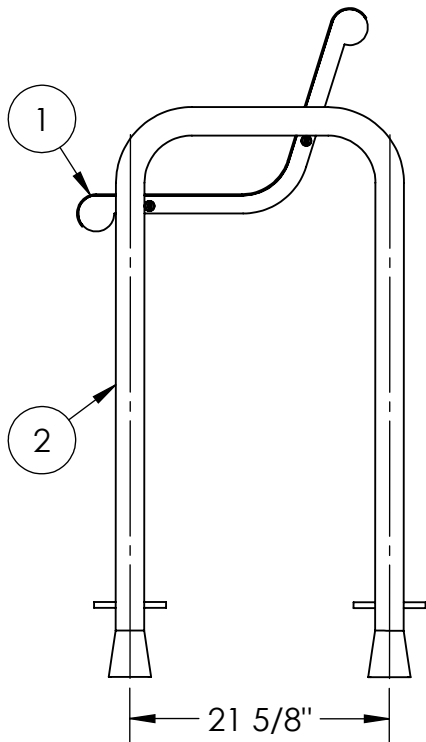
The Best Commercial Outdoor Furniture Available. Period.



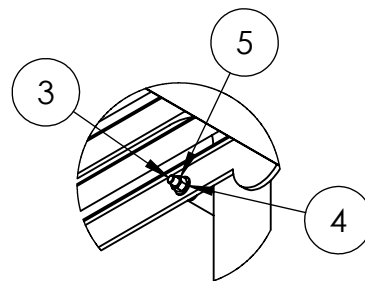


# 4' Laser Grand Contour With Back Direct Bury

971-102



DETAIL A  
SCALE 1 : 8



DETAIL B  
SCALE 1 : 8



## PREMIER POLYSTEEL

The Best Commercial Outdoor Furniture Available. Period.



SIZE  
A



1. Drill plastic out of the mounting holes on the seat using a 7/16" diameter drill bit.
2. Bolt the seat to the legs and tighten up.
3. Mark out the holes for the legs on the ground in the desired location. Drill 10" diameter holes at each location to a minimum depth of 30". You need to be below the frost line in your area.
4. Place the seat into the holes and support at the desired height. Level the seat.
5. Fill the holes with concrete and crown the top so that water will run off. Let stand for 24 hours before removing the supports.

#### Tools List

- 7/16" Drill bit
- 9/16" Socket
- 9/16" Wrench
- Level
- Impact Gun (Optional)
- Drill

*Periodic check of bolts tightness recommended*

In accordance to California law: WARNING - This product contains a chemical known to the State of California to cause cancer and birth defects or other reproductive harm.



**PREMIER POLYSTEEL**

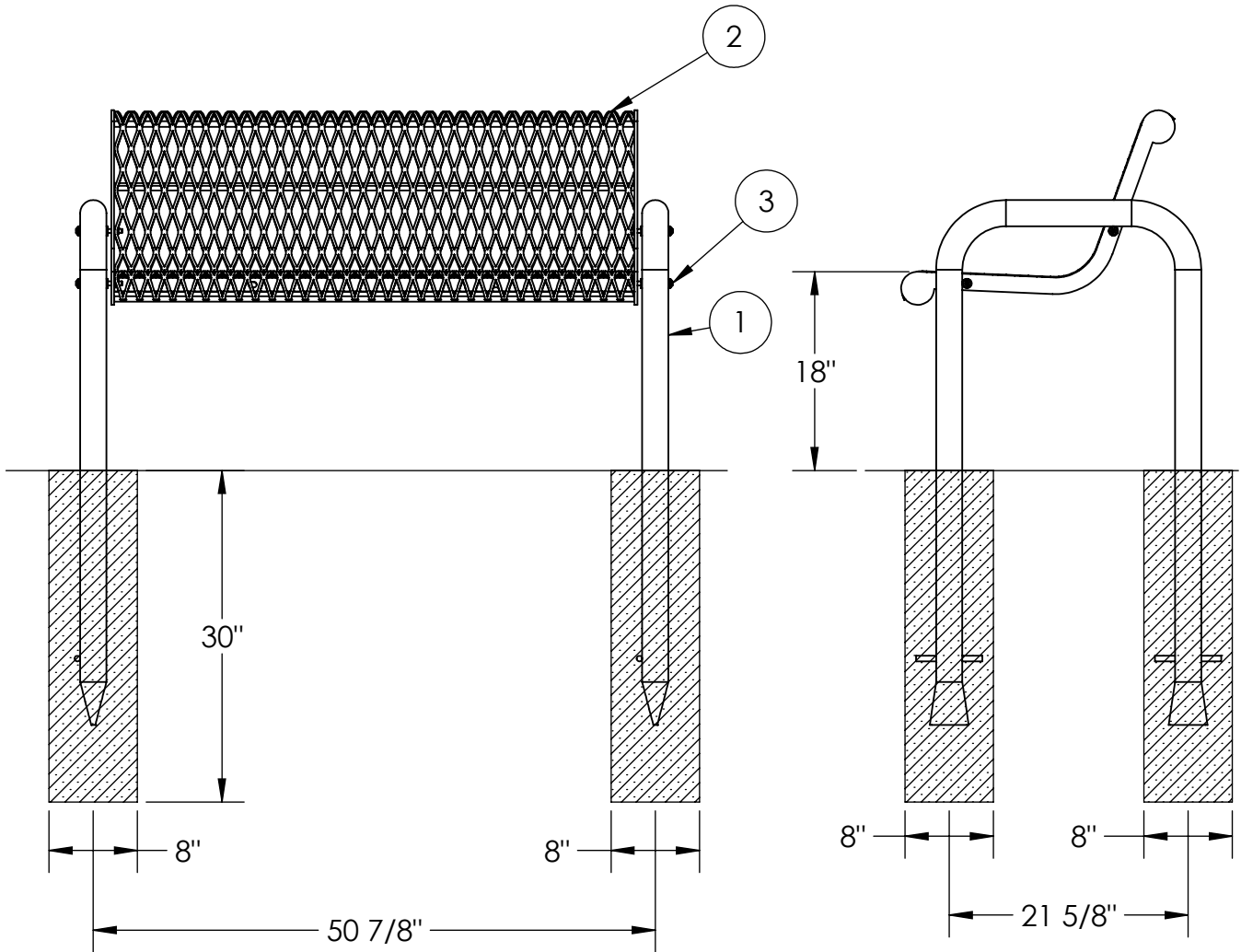
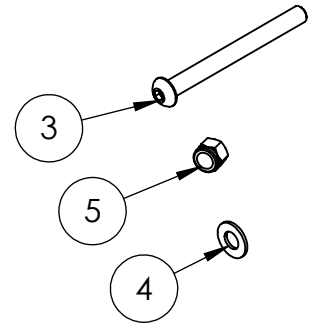
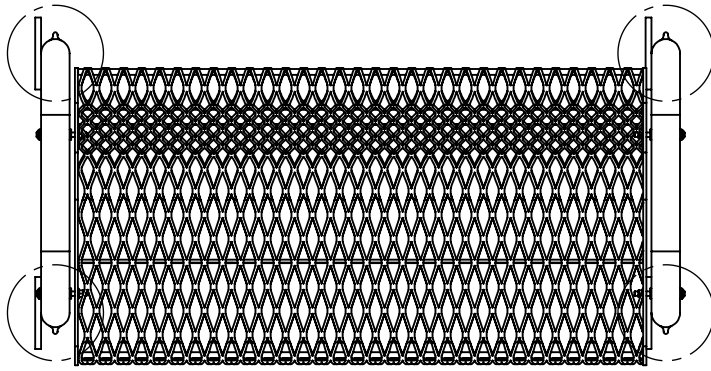
The Best Commercial Outdoor Furniture Available. Period.





# 4' Grand Contour Bench, Direct Bury Expanded Metal

974-102

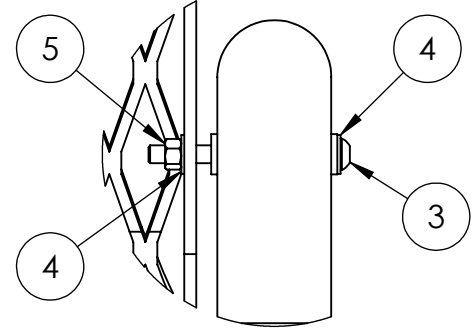
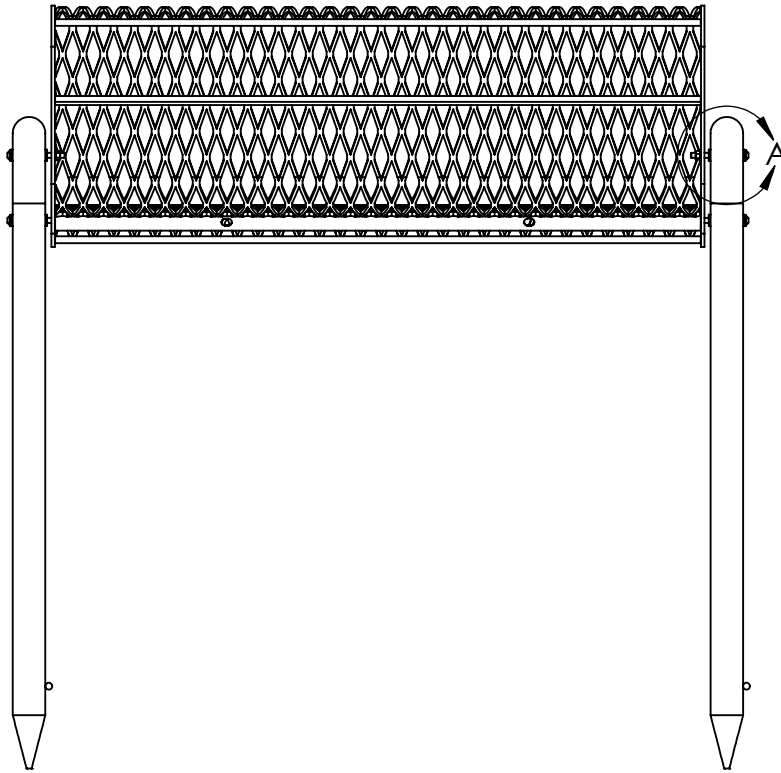


## PREMIER POLYSTEEL

The Best Commercial Outdoor Furniture Available. Period.



SIZE  
A



DETAIL A  
SCALE 1 : 4

1. Drill plastic out of the mounting holes on the seat and stands using a 7/16" dia. drill bit.
2. Fasten the seat to the stands.
3. Position the bench where desired and drill holes in the ground accordingly. The holes should go below the frost line in your area.
4. Place the stands into the holes and support the bench at the desired height.
5. Make sure the bench is level end to end and the top of the stands are level front to back.
6. Fill holes with concrete and let cure before removing supports.

ITEM NO.	PART NUMBER	DESCRIPTION	QTY.
1	733-212	Grand Contour Tube Frame DB	2
2	623-014	4' Grand Contour Expanded Metal Seat	1
3	516-033	3/8"x4" SS Button Head Cap Screw	4
4	516-023	3/8" SS Flat Washer	8
5	516-028	3/8" SS Nylock Nut	4

In accordance to California law: WARNING - This product contains a chemical known to the State of California to cause cancer and birth defects or other reproductive harm.



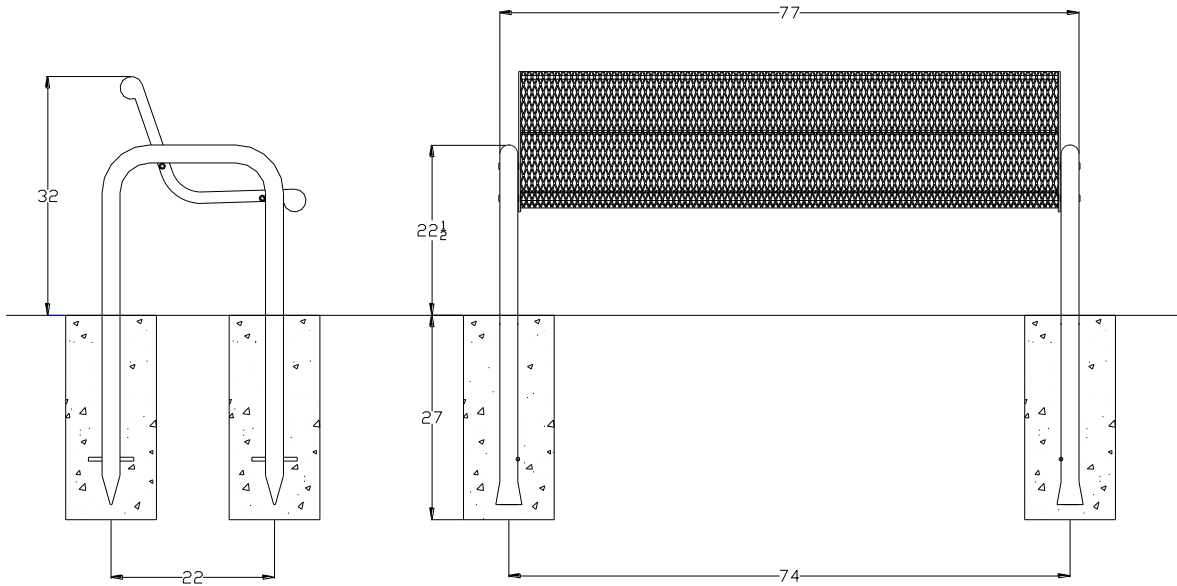
**PREMIER POLYSTEEL**

The Best Commercial Outdoor Furniture Available. Period.





# 974-302



Part No.	Description	Qty.
623-015	6' Grand Contour Exp Seat	1
733-212	Grand Contour Stand	2
516-033	3/8" X 4" SS Btn Skt Cap	4
516-028	3/8" SS Nylock Nut	4
516-023	3/8" SS Washer	8

- 1 Drill plastic out of the mounting holes on the seat and stands using a 7/16" dia. drill bit.
- 2 Fasten the seat to the stands.
- 3 Tighten all of the bolts.
- 4 Position bench where desired and drill holes in the ground accordingly.
- 5 Put legs into holes and support the bench so that it's level end to end and the top of the stands are level front to back.

In Accordance to California law: WARNING This product contains a chemical known to the State of California to cause cancer and birth defects or other reproductive harm.

*Periodic check of bolt tightness recommended.*



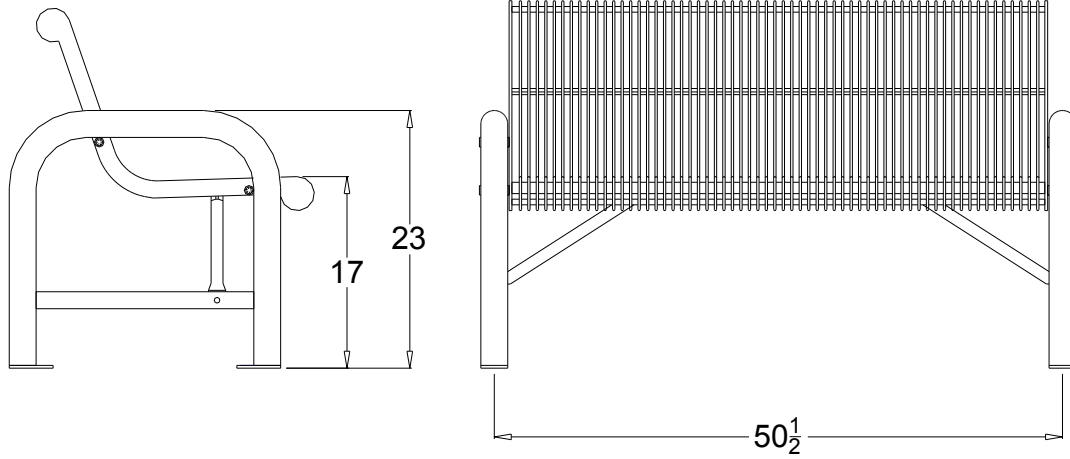
## PREMIER POLYSTEEL

The Best Commercial Outdoor Furniture Available. Period.





# 939-103



Part No.	Description	Qty.
623-004	4' Grand Contour Seat	1
733-013	Grand Contour Stand	2
631-313	Brace	2
516-033	3/8"x4" SS Button Socket Cap	4
516-058	3/8" X 1-1/2" SS Hex Bolt	4
516-028	3/8" SS Nylock Nuts	8
516-023	3/8" SS Flat Washer	16

- 1 Drill plastic out of the mounting holes on the seat, braces and stands using a 7/16" dia. drill bit.
- 2 Fasten the seat to the stands, then attach the braces to the seat and stands.
- 3 Make sure stands, seat and braces are aligned, then tighten all of the bolts.
- 4 Position bench where desired and mount to surface.

Periodic check of bolt tightness is recommended.

In Accordance to California law: WARNING This product contains a chemical known to the State of California to cause cancer and birth defects or other reproductive harm.

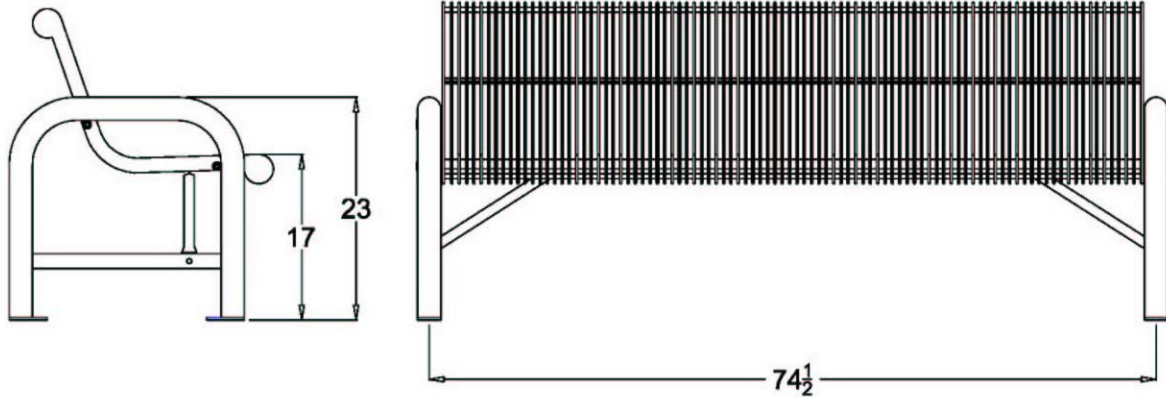


**PREMIER POLYSTEEL**  
The Best Commercial Outdoor Furniture Available. Period.





# 939-303



Part No.	Description	Qty.
623-005	6' Grand Contour Seat	1
733-013	Grand Contour Stand	2
631-313	Brace	2
516-033	3/8"x4" SS Button Socket Cap	4
516-058	3/8"x1-1/2" SS Hex Bolt	4
516-028	3/8" SS Nylock Nuts	8
516-023	3/8" SS Flat Washer	16

- 1 Drill plastic out of the mounting holes on the seat, stands and braces using a 7/16" dia. drill bit.
- 2 Fasten the seat to the stands loosely.
- 3 Align the stands vertically and tighten the bolts.
- 4 Position bench where desired and mount to surface.

In Accordance to California law: WARNING This product contains a chemical known to the State of California to cause cancer and birth defects or other reproductive harm.

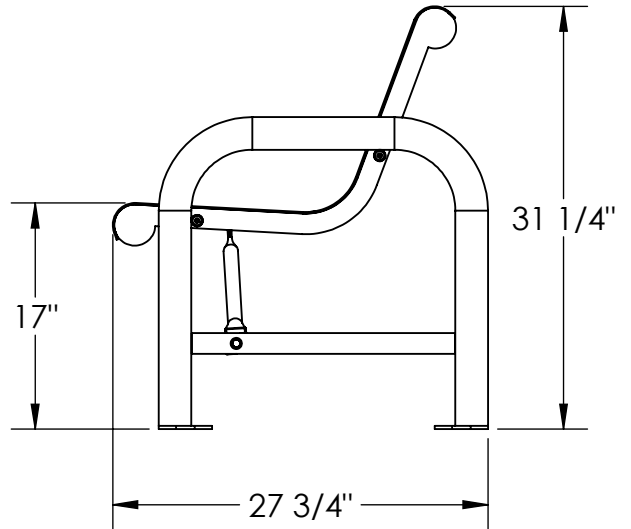
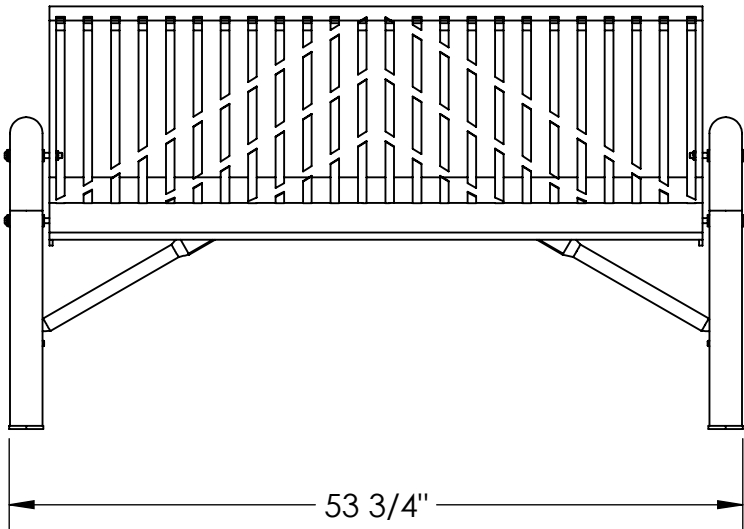
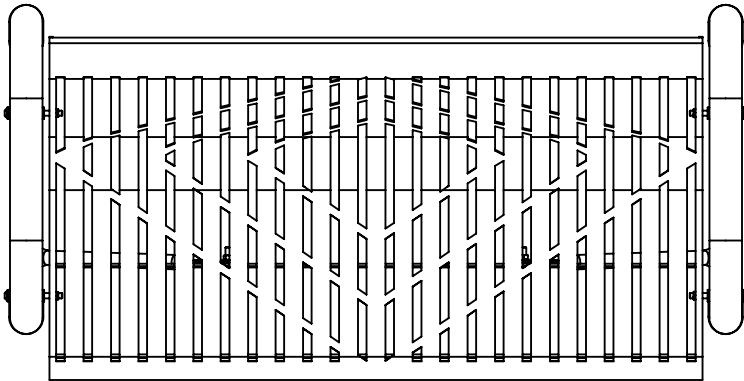
*Periodic check of bolt tightness recommended.*





# 4' Grand Contour Laser Bench, Free Standing

971-103

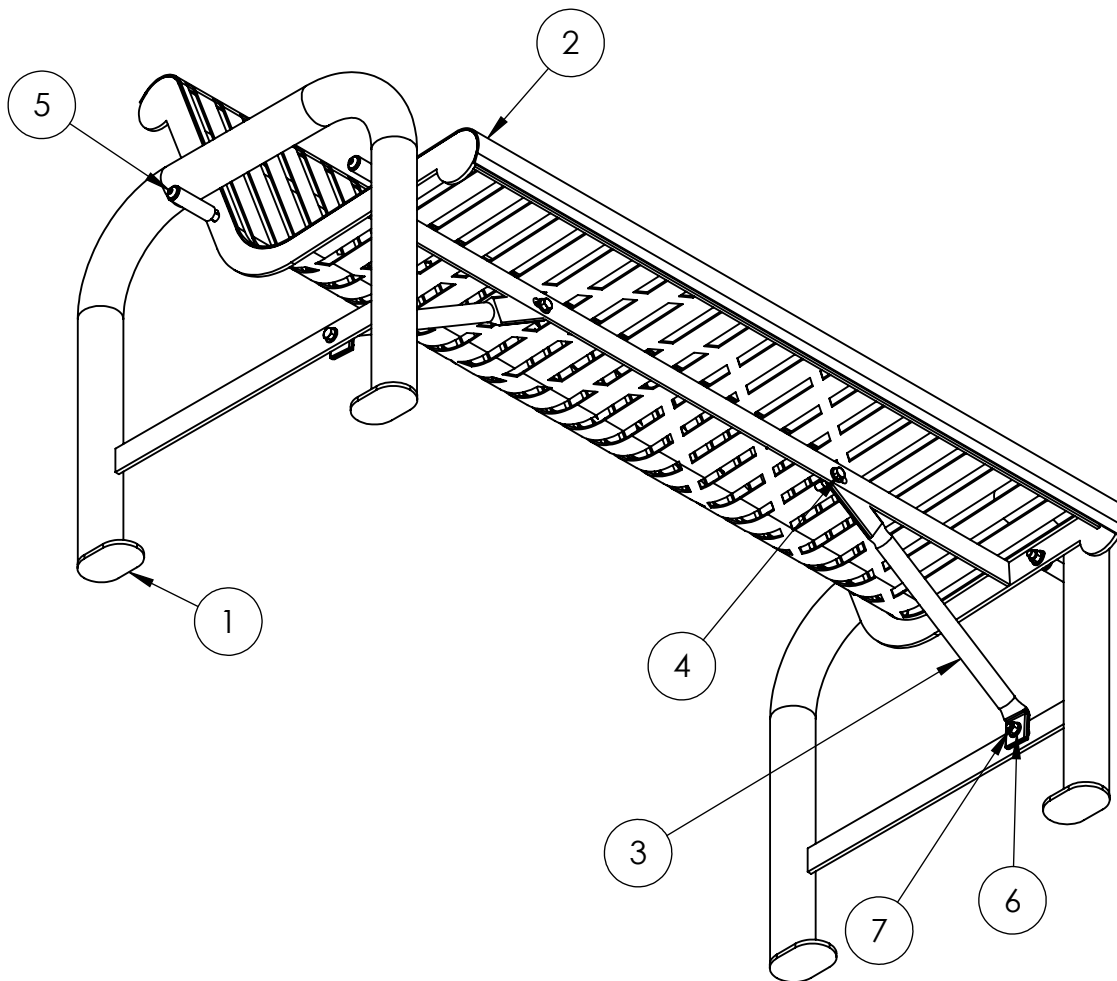


## PREMIER POLYSTEEL

The Best Commercial Outdoor Furniture Available. Period.



SIZE  
**A**



In Accordance to California law: WARNING This product contains a chemical known to the State of California to cause cancer and birth defects or other reproductive harm.

1. Drill plastic out of the mounting holes on the seat, braces and stands using a 7/16" dia. drill bit.
2. Fasten the seat to the stands loosely, then attach the braces to the seat and stands loosely.
3. Make sure stands, seat and braces are aligned, then tighten all of the bolts.
4. Position bench where desired and mount to surface if desired.

ITEM NO.	PART NUMBER	DESCRIPTION	QTY.
1	733-013	Grand Contour Free Standing Bench Stand	2
2	625-004	4' Grand Contour Laser Bench	1
3	631-313	Brace for FS Bench	2
4	516-058	3/8"x1-1/2" SS Hex Bolt	4
5	516-033	3/8"x4" SS Button Head Cap Screw	4
6	516-023	3/8" SS Flat Washer	16
7	516-028	3/8" SS Nylock Nut	8



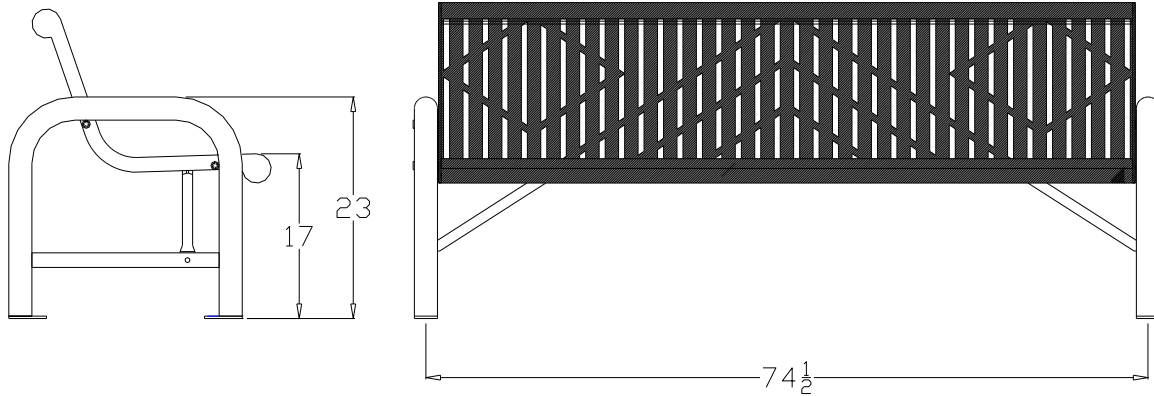
**PREMIER POLYSTEEL**

The Best Commercial Outdoor Furniture Available. Period.





# 971-303



Part No.	Description	Qty.
625-005	6' Contour FlatRib Seat	1
733-013	Grand Contour Stand	2
631-313	Contour Bench Brace	2
516-033	3/8"x4" SS Button Socket Cap	4
516-058	3/8"x1-1/2" SS Hex Bolt	4
516-028	3/8" SS Nylock Nuts	8
516-023	3/8" SS Flat Washer	16

- 1 Drill plastic out of the mounting holes on the seat, braces and stands using a 7/16" dia. drill bit.
- 2 Fasten the seat to the stands loosely and then fasten the brace to the stands and seat.
- 3 Make sure the bench is level and tighten all of the bolts.

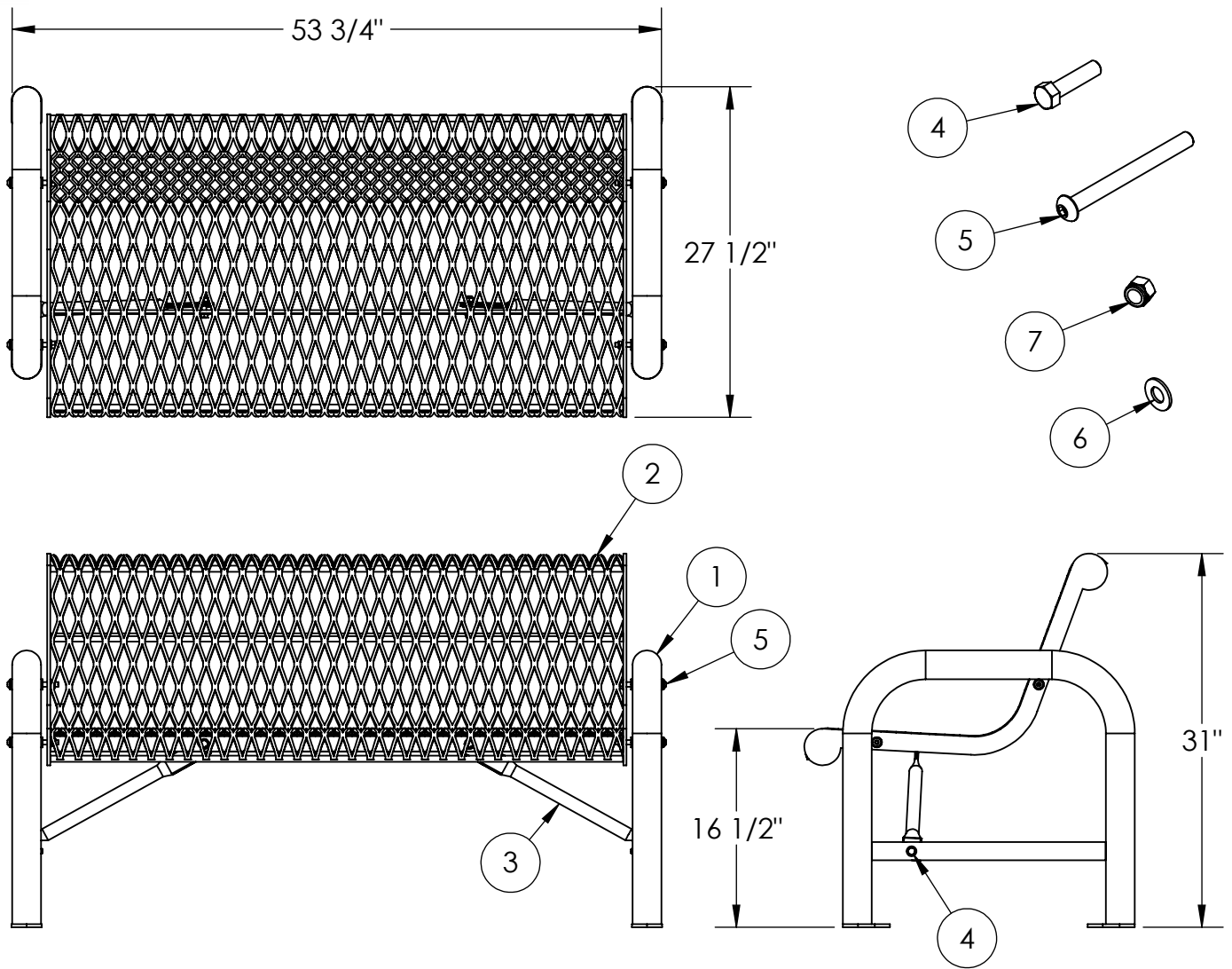
In Accordance to California law: WARNING This product contains a chemical known to the State of California to cause cancer and birth defects or other reproductive harm.

*Periodic check of bolt tightness recommended.*



# 4' Grand Contour Bench, Free Standing Expanded Metal

974-103



1. Drill plastic out of the mounting holes on the seat, braces and stands using a 7/16" dia. drill bit.
2. Fasten the seat to the stands loosely and then fasten the brace to the stands and seat.
3. Make sure the bench is level and tighten all the bolts.
4. Position bench where desired and anchor to the floor.

In Accordance to California law: WARNING This product contains a chemical known to the State of California to cause cancer and birth defects or other reproductive harm.

ITEM NO.	PART NUMBER	DESCRIPTION	QTY.
1	733-013	Grand Contour Free Standing Bench Stand	2
2	623-014	4' Grand Contour Expanded Metal Seat	1
3	631-313	Brace for FS Bench	2
4	516-058	3/8"x1-1/2" SS Hex Bolt	4
5	516-033	3/8"x4" SS Button Head Cap Screw	4
6	516-023	3/8" SS Flat Washer	16
7	516-028	3/8" SS Nylock Nut	8



## PREMIER POLYSTEEL

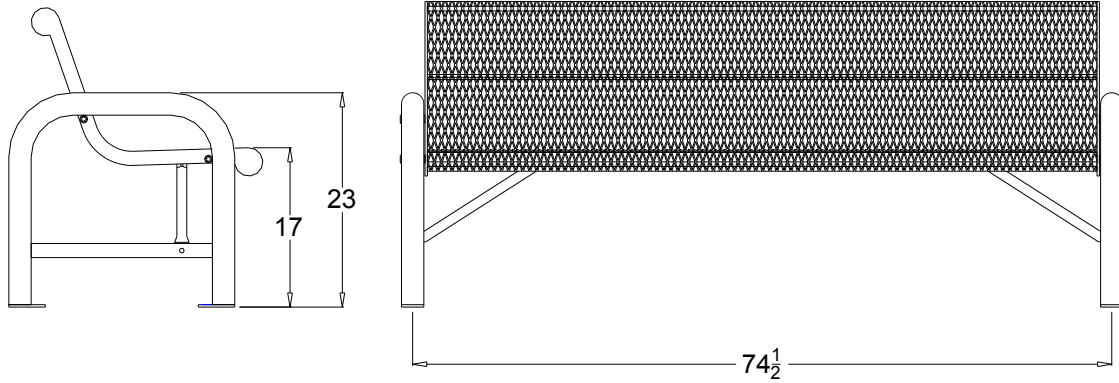
The Best Commercial Outdoor Furniture Available. Period.



SIZE  
A



# 974-303



Part No.	Description	Qty.
623-015	6' Grand Contour Exp Seat	1
733-013	Grand Contour Stand	2
631-313	Contour Bench Brace	2
516-033	3/8" X 4" SS Btn Skt Cap	4
516-058	3/8" X 1-1/2" SS Hex Bolt	4
516-028	3/8" SS Nylock Nut	8
516-023	3/8" SS Washer	16

- 1 Drill plastic out of the mounting holes on the seat, braces and stands using a 7/16" dia. drill bit.
- 2 Fasten the seat to the stands loosely and then fasten the brace to the stands and seat.
- 3 Tighten all of the bolts.
- 4 Make sure the bench is level and tighten all the bolts.
- 5 Position bench where desired and anchor to the floor.

In Accordance to California law: WARNING This product contains a chemical known to the State of California to cause cancer and birth defects or other reproductive harm.

*Periodic check of bolt tightness recommended.*