

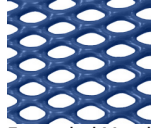


# Champion Kids Tables

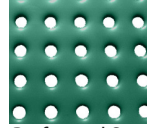


**941-101**  
4' Free Standing  
Expanded Metal Top and Seats

Champion Tables are Available in:



Expanded Metal



Perforated Steel



**941-301**  
6' Free Standing  
Expanded Metal Top and Seats

| Description               | Expanded Metal | Perforated Steel | Weight (lbs) |
|---------------------------|----------------|------------------|--------------|
| 4' Free Standing          | 941-101        | 941-1P1          | 140          |
| 4' multi-ped, Direct Bury | 941-102        | 941-1P2          | 260          |
| 6' Free Standing          | 941-301        | 941-3P1          | 165          |
| 6' multi-ped, Direct Bury | 941-302        | 941-3P2          | 300          |
| 8' Free Standing          | 941-501        | 941-5P1          | 190          |
| 3' Square Free Standing   | 944-091        | 944-1P1          | 240          |



**941-501**  
8' Free Standing  
Expanded Metal Top and Seats



**944-091**  
3' Square Free Standing  
Expanded Metal Top and Seats

## CONTACT US

Phone: 641-324-1093 • Toll Free US & Canada: 800-533-6033

Email: [sales@premierpolysteel.com](mailto:sales@premierpolysteel.com) • Web: [www.premierpolysteel.com](http://www.premierpolysteel.com)



**PREMIER POLYSTEEL**  
The Best Commercial Outdoor Furniture Available. Period.

